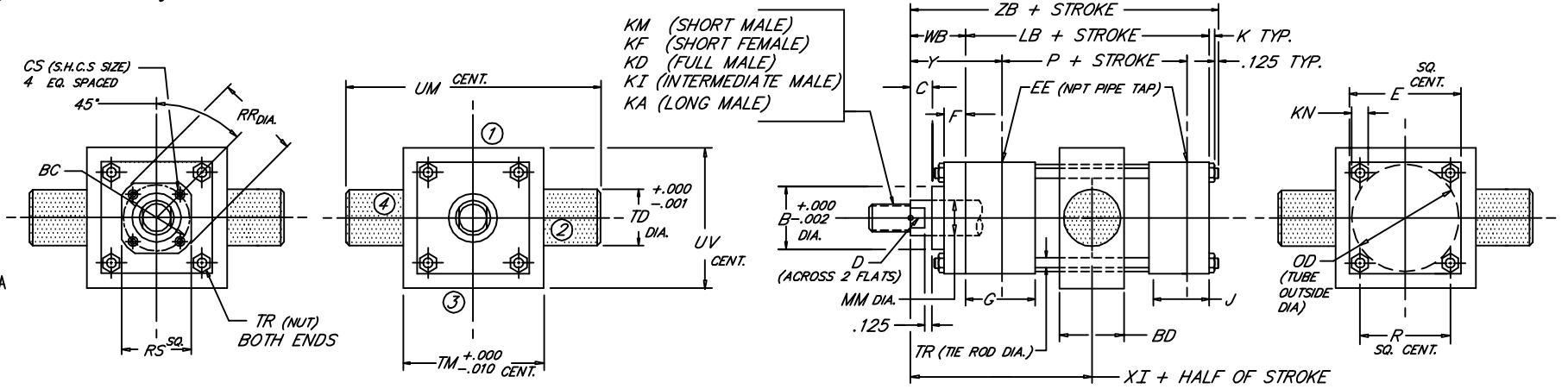
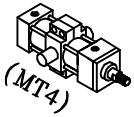


INTERMEDIATE TRUNNION

Heavy Duty Steel Air Cylinder

Peninsular Mounting Style: **MH 6**



1.15

BORE	ROD					NPT																				MINIMUM STROKE								
	MM	KM & KF		KD		KA	B	BC	BD	C	CS	D	E	EE	F	G	J	K	KN	LB	OD	P	R	RR	RS		TD	TM	TR	UM	UV	WB	XI	Y
1.500	.625	7/16"-20 x .750	5/8"-18 x .750	1/2"-20 x .750	1/2"-20 x 1.125	1.124	---	1.25	.375	---	.500	2.000	3/8	.375	1.500	1.000	.312	.438	3.625	1.750	2.335	1.428	---	---	1.000	2.500	.250	4.500	2.500	1.000	3.063	1.875	5.062	.125
	1.000	3/4"-16 x 1.125	1"-14 x 1.125	7/8"-14 x 1.125	7/8"-14 x 1.875	1.499	---	1.50	.500	---	.875	2.500	3/8	.375	1.500	1.000	.344	.500	3.625	2.250	2.335	1.838	---	---	1.000	3.000	.312	5.000	3.000	1.375	3.438	2.250	5.437	.375
	1.375	1"-14 x 1.625	1 3/8"-12 x 1.625	1 1/4"-12 x 1.625	1 1/4"-12 x 2.500	1.999	---	2.000	.625	---	1.125	3.000	3/8	.375	1.500	1.000	.344	.500	3.750	2.750	2.460	2.192	---	---	1.000	3.500	.312	5.500	3.500	1.625	3.688	2.500	5.719	.250
2.000	.625	7/16"-20 x .750	5/8"-18 x .750	1/2"-20 x .750	1/2"-20 x 1.125	1.124	---	1.50	.375	---	.500	2.500	3/8	.375	1.500	1.000	.312	.438	3.625	1.750	2.335	1.428	---	---	1.000	2.500	.250	4.500	2.500	1.000	3.063	1.875	5.094	.375
	1.000	3/4"-16 x 1.125	1"-14 x 1.125	7/8"-14 x 1.125	7/8"-14 x 1.875	1.499	---	1.50	.500	---	.875	2.500	3/8	.375	1.500	1.000	.344	.500	3.625	2.250	2.335	1.838	---	---	1.000	3.000	.312	5.000	3.000	1.375	3.438	2.250	5.469	.375
	1.375	1"-14 x 1.625	1 3/8"-12 x 1.625	1 1/4"-12 x 1.625	1 1/4"-12 x 2.500	1.999	---	2.000	.625	---	1.125	3.000	3/8	.375	1.500	1.000	.344	.500	3.750	2.750	2.460	2.192	---	---	1.000	3.500	.312	5.500	3.500	1.625	3.750	2.500	5.844	.250
2.500	.625	7/16"-20 x .750	5/8"-18 x .750	1/2"-20 x .750	1/2"-20 x 1.125	1.124	---	1.50	.375	---	.500	3.000	3/8	.375	1.500	1.000	.312	.438	3.625	1.750	2.335	1.428	---	---	1.000	2.500	.250	4.500	2.500	1.000	3.125	1.875	5.219	.250
	1.000	3/4"-16 x 1.125	1"-14 x 1.125	7/8"-14 x 1.125	7/8"-14 x 1.875	1.499	---	1.50	.500	---	.875	3.000	3/8	.375	1.500	1.000	.344	.500	3.750	2.750	2.460	2.192	---	---	1.000	3.500	.312	5.500	3.500	1.375	3.500	2.250	5.594	.250
	1.375	1"-14 x 1.625	1 3/8"-12 x 1.625	1 1/4"-12 x 1.625	1 1/4"-12 x 2.500	1.999	---	2.000	.625	---	1.125	3.000	3/8	.375	1.500	1.000	.344	.500	3.750	2.750	2.460	2.192	---	---	1.000	3.500	.312	5.500	3.500	1.625	3.750	2.500	5.844	.250
3.250	1.000	3/4"-16 x 1.125	1"-14 x 1.125	7/8"-14 x 1.125	7/8"-14 x 1.875	1.499	---	2.00	.500	---	.875	3.750	1/2	.625	1.750	1.250	.438	.562	4.250	3.500	2.750	2.758	---	---	1.000	4.500	.375	6.500	4.250	1.375	3.750	2.375	6.188	.750
	1.375	1"-14 x 1.625	1 3/8"-12 x 1.625	1 1/4"-12 x 1.625	1 1/4"-12 x 2.500	1.999	2.562	2.00	.625	---	1.125	3.750	1/2	.625	1.750	1.250	.438	.562	4.250	3.500	2.750	2.758	---	---	1.000	4.500	.375	6.500	4.250	1.625	4.000	2.625	6.438	.750
	1.750	1 1/4"-12 x 2.000	1 3/4"-12 x 2.000	1 1/2"-12 x 2.000	1 1/2"-12 x 3.000	2.374	2.562	2.00	.750	---	1.500	4.500	1/2	.625	1.750	1.250	.438	.562	4.250	4.250	2.750	3.323	3.734	3.000	1.000	5.250	.375	7.250	5.000	1.875	4.250	2.875	6.688	.750
4.000	1.000	3/4"-16 x 1.125	1"-14 x 1.125	7/8"-14 x 1.125	7/8"-14 x 1.875	1.499	2.562	2.00	.500	---	.875	4.500	1/2	.625	1.750	1.250	.438	.562	4.250	4.250	2.750	3.323	3.734	3.000	1.000	5.250	.375	7.250	5.000	2.000	4.375	3.000	6.813	.750
	1.375	1"-14 x 1.625	1 3/8"-12 x 1.625	1 1/4"-12 x 1.625	1 1/4"-12 x 2.500	1.999	2.562	2.00	.625	---	1.125	4.500	1/2	.625	1.750	1.250	.438	.562	4.250	4.250	2.750	3.323	3.734	3.000	1.000	5.250	.375	7.250	5.000	1.625	4.000	2.625	6.438	.750
	1.750	1 1/4"-12 x 2.000	1 3/4"-12 x 2.000	1 1/2"-12 x 2.000	1 1/2"-12 x 3.000	2.374	2.562	2.00	.750	---	1.500	4.500	1/2	.625	1.750	1.250	.438	.562	4.250	4.250	2.750	3.323	3.734	3.000	1.000	5.250	.375	7.250	5.000	1.875	4.250	2.875	6.688	.750
5.000	1.000	3/4"-16 x 1.125	1"-14 x 1.125	7/8"-14 x 1.125	7/8"-14 x 1.875	1.499	2.562	2.00	.500	---	.875	5.500	1/2	.625	1.750	1.250	.438	.562	4.500	5.250	3.000	4.101	4.312	3.750	1.000	6.250	.500	8.250	6.000	1.375	3.875	2.375	6.594	.500
	1.375	1"-14 x 1.625	1 3/8"-12 x 1.625	1 1/4"-12 x 1.625	1 1/4"-12 x 2.500	1.999	2.562	2.00	.625	---	1.125	5.500	1/2	.625	1.750	1.250	.438	.562	4.500	5.250	3.000	4.101	4.312	3.750	1.000	6.250	.500	8.250	6.000	1.625	4.125	2.625	6.844	.500
	1.750	1 1/4"-12 x 2.000	1 3/4"-12 x 2.000	1 1/2"-12 x 2.000	1 1/2"-12 x 3.000	2.374	2.562	2.00	.750	---	1.500	5.500	1/2	.625	1.750	1.250	.438	.562	4.500	5.250	3.000	4.101	4.312	3.750	1.000	6.250	.500	8.250	6.000	1.875	4.375	2.875	7.094	.500
6.000	1.000	3/4"-16 x 1.125	1"-14 x 1.125	7/8"-14 x 1.125	7/8"-14 x 1.875	1.499	2.562	2.00	.500	---	.875	6.500	3/4	.625	2.000	1.500	.594	.750	5.000	6.250	3.250	4.879	4.312	3.750	1.375	7.625	.500	10.375	7.000	2.000	4.500	3.000	7.219	.500
	1.375	1"-14 x 1.625	1 3/8"-12 x 1.625	1 1/4"-12 x 1.625	1 1/4"-12 x 2.500	1.999	2.562	2.00	.625	---	1.125	6.500	3/4	.625	2.000	1.500	.594	.750	5.000	6.250	3.250	4.879	4.312	3.750	1.375	7.625	.500	10.375	7.000	2.250	4.750	3.250	7.469	.500
	1.750	1 1/4"-12 x 2.000	1 3/4"-12 x 2.000	1 1/2"-12 x 2.000	1 1/2"-12 x 3.000	2.374	2.562	2.00	.750	---	1.500	6.500	3/4	.625	2.000	1.500	.594	.750	5.000	6.250	3.250	4.879	4.312	3.750	1.375	7.625	.500	10.375	7.000	1.875	4.625	3.000	7.594	.500
6.000	2.000	1 1/2"-12 x 2.250	2"-12 x 2.250	1 3/4"-12 x 2.250	1 3/4"-12 x 3.500	2.624	3.812	2.50	.875	---	1.688	6.500	3/4	.625	2.000	1.500	.594	.750	5.000	6.250	3.250	4.879	4.312	3.750	1.375	7.625	.500	10.375	7.000	2.000	4.750	3.125	7.719	.500
	2.500	1 7/8"-12 x 3.000	2 1/2"-12 x 3.000	2 1/4"-12 x 3.000	2 1/4"-12 x 4.500	3.124	3.812	2.50	1.000	---	2.062	6.500	3/4	.625	2.000	1.500	.594	.750	5.000	6.250	3.250	4.879	4.312	3.750	1.375	7.625	.500	10.375	7.000	2.250	5.000	3.375	7.969	.500
	3.000	2 1/4"-12 x 3.500	3"-12 x 3.500	2 3/4"-12 x 3.500	2 3/4"-12 x 5.500	3.749	4.700	2.50	1.000	---	2.625	6.500	3/4	.625	2.000	1.500	.594	.750	5.000	6.250	3.250	4.879	4.312	3.750	1.375	7.625	.500	10.375	7.000	2.250	5.000	3.375	7.969	.500
6.000	3.500	2 1/2"-12 x 3.500	3 1/2"-12 x 3.500	3 1/4"-12 x 3.500	3 1/4"-12 x 5.500	4.249	4.700	2.50	1.000	---	3.000	6.500	3/4	.625	2.000	1.500	.594	.750	5.000	6.250	3.250	4.879	4.312	3.750	1.375	7.625	.500	10.375	7.000	2.250	5.000	3.375	7.969	.500
	4.000	3"-12 x 4.000	4"-12 x 4.000	3 3/4"-12 x 4.000	3 3/4"-12 x 7.500	4.749	---	---	1.000	---	3.375	6.500	3/4	.750	---	---	---	---	---	---	---	---	---	---	---	---	---	---	---	---	---	---	---	.500

FILE: MH6S2.dwg REV: 09-25-06