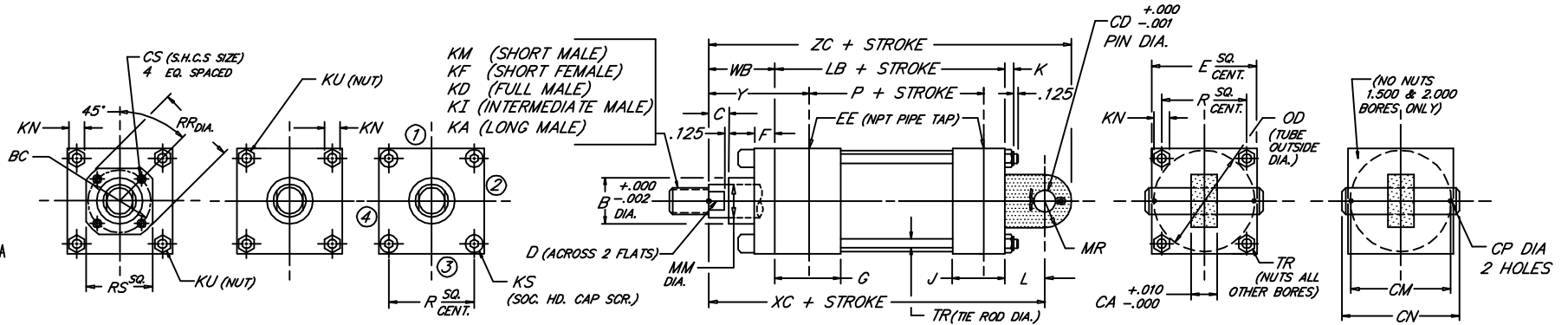
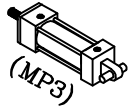


CAP FIXED EYE

Heavy Duty Steel Air Cylinder

Peninsular Mounting Style: **MH 25**



1.31

BORE	ROD										/NPT														TR	WB	XC	Y	ZC								
	MM	KM & KF	KD	KI	KA	B	BC	C	CA	CD	CM	CN	CP	CS	D	E	EE	F	G	J	K	KN	KS	KU						L	LB	MR	OD	P	R	RR	RS
1.500	.625	7/16"-20 x .750	5/8"-18 x .750	1/2"-20 x .750	1/2"-20 x 1.125	1.124	---	.375	.735	.500	1.938	2.281	.106	---	.500	2.000	3/8	.375	1.500	1.000	.312	.438	---	.250	.750	3.625	.500	1.750	2.335	1.428	---	---	---	1.000	5.375	1.875	5.875
	1.000	3/4"-16 x 1.125	1"-14 x 1.125	7/8"-14 x 1.125	7/8"-14 x 1.875	1.499	---	.500	.735	.500	1.938	2.281	.106	---	.875	2.500	3/8	.375	1.500	1.000	.344	.500	---	.312	.750	3.625	.500	2.250	2.335	1.838	---	---	---	1.375	5.750	2.250	6.250
2.000	.625	7/16"-20 x .750	5/8"-18 x .750	1/2"-20 x .750	1/2"-20 x 1.125	1.124	---	.375	.735	.500	1.938	2.281	.106	---	.500	2.500	3/8	.375	1.500	1.000	.344	.500	---	.312	.750	3.625	.500	2.250	2.335	1.838	---	---	---	1.000	5.375	1.875	5.875
	1.000	3/4"-16 x 1.125	1"-14 x 1.125	7/8"-14 x 1.125	7/8"-14 x 1.875	1.499	---	.500	.735	.500	1.938	2.281	.106	---	.875	2.500	3/8	.375	1.500	1.000	.344	.500	---	.312	.750	3.625	.500	2.250	2.335	1.838	---	---	---	1.375	5.750	2.250	6.250
2.500	.625	7/16"-20 x .750	5/8"-18 x .750	1/2"-20 x .750	1/2"-20 x 1.125	1.124	---	.375	.735	.500	1.938	2.281	.106	---	.500	3.000	3/8	.375	1.500	1.000	.344	.500	---	.312	.750	3.750	.500	2.750	2.460	2.192	---	---	.312	1.000	5.500	1.875	6.000
	1.000	3/4"-16 x 1.125	1"-14 x 1.125	7/8"-14 x 1.125	7/8"-14 x 1.875	1.499	---	.500	.735	.500	1.938	2.281	.106	---	.875	3.000	3/8	.375	1.500	1.000	.344	.500	---	.312	.750	3.750	.500	2.750	2.460	2.192	---	---	---	1.375	5.875	2.250	6.375
3.250	1.375	1"-14 x 1.625	3/8"-12 x 1.625	1 1/4"-12 x 1.625	1 1/4"-12 x 2.500	1.999	---	.625	1.235	.750	2.719	3.094	.140	---	1.125	3.750	1/2	.625	1.750	1.250	.438	.562	.375	---	1.250	4.250	.750	3.500	2.750	2.758	---	---	.375	1.375	6.875	2.375	7.625
	1.750	1 1/4"-12 x 2.000	3/4"-12 x 2.000	1 1/2"-12 x 2.000	1 1/2"-12 x 3.000	2.374	---	.750	1.235	.750	2.719	3.094	.140	---	1.500	3.750	1/2	.625	1.750	1.250	.438	.562	.375	---	1.250	4.250	.750	3.500	2.750	2.758	---	---	---	1.625	7.125	2.625	7.875
4.000	2.000	1 1/2"-12 x 2.250	2"-12 x 2.250	3/4"-12 x 2.250	3/4"-12 x 3.500	2.624	---	.875	1.235	.750	2.719	3.094	.140	---	1.688	4.500	1/2	.625	1.750	1.250	.438	.562	.375	---	1.250	4.250	.750	3.500	3.323	3.734	3.000	.375	1.875	7.375	2.875	8.125	
	2.500	1 7/8"-12 x 3.000	2 1/2"-12 x 3.000	2 1/4"-12 x 3.000	2 1/4"-12 x 4.500	3.124	---	1.000	1.235	.750	2.719	3.094	.140	---	2.062	4.500	1/2	.625	1.750	1.250	.438	.562	.375	---	1.250	4.250	.750	3.500	3.323	3.734	3.000	.375	2.000	7.500	3.000	8.250	
5.000	1.000	3/4"-16 x 1.125	1"-14 x 1.125	7/8"-14 x 1.125	7/8"-14 x 1.875	1.499	2.562	.500	1.235	.750	2.719	3.094	.140	---	.250	5.500	1/2	.625	1.750	1.250	.594	.750	---	.500	1.250	4.500	.750	5.250	3.000	4.101	4.312	3.750	.500	1.375	6.875	2.375	7.625
	1.375	1"-14 x 1.625	3/8"-12 x 1.625	1 1/4"-12 x 1.625	1 1/4"-12 x 2.500	1.999	2.562	.625	1.235	.750	2.719	3.094	.140	---	.250	5.500	1/2	.625	1.750	1.250	.594	.750	---	.500	1.250	4.500	.750	5.250	3.000	4.101	4.312	3.750	.500	1.625	7.125	2.625	7.875
6.000	1.750	1 1/4"-12 x 2.000	3/4"-12 x 2.000	1 1/2"-12 x 2.000	1 1/2"-12 x 3.000	2.374	3.267	.750	1.235	.750	2.719	3.094	.140	---	.312	5.500	1/2	.625	1.750	1.250	.594	.750	---	.500	1.250	4.500	.750	5.250	3.000	4.101	4.312	3.750	.500	1.875	7.375	2.875	8.125
	2.000	1 1/2"-12 x 2.250	2"-12 x 2.250	3/4"-12 x 2.250	3/4"-12 x 3.500	2.624	3.812	.875	1.235	.750	2.719	3.094	.140	---	.312	5.500	1/2	.625	1.750	1.250	.594	.750	---	.500	1.250	4.500	.750	5.250	3.000	4.101	4.312	3.750	.500	2.000	7.500	3.000	8.500
6.000	2.500	1 7/8"-12 x 3.000	2 1/2"-12 x 3.000	2 1/4"-12 x 3.000	2 1/4"-12 x 4.500	3.124	3.812	1.000	1.485	1.000	3.219	3.594	.140	---	.312	6.500	3/4	.625	2.000	1.500	.594	.750	---	.500	1.500	5.000	1.000	6.250	3.250	4.879	.500	2.250	8.000	3.250	8.750		
	3.000	2 1/4"-12 x 3.500	3"-12 x 3.500	2 3/4"-12 x 3.500	2 3/4"-12 x 5.500	3.749	4.700	1.000	1.485	1.000	3.219	3.594	.140	---	.375	6.500	3/4	.625	2.000	1.500	.594	.750	---	.500	1.500	5.000	1.000	6.250	3.250	4.879	.500	2.500	8.500	3.375	9.375		
6.000	3.500	2 1/2"-12 x 3.500	3 1/2"-12 x 3.500	3 1/4"-12 x 3.500	3 1/4"-12 x 6.500	4.249	5.200	1.000	1.485	1.000	3.219	3.594	.140	---	.375	6.500	3/4	.625	2.000	1.500	.594	.750	---	.500	1.500	5.000	1.000	6.250	3.250	4.879	.500	2.250	8.500	3.375	9.375		
	4.000	3"-12 x 4.000	4"-12 x 4.000	3 3/4"-12 x 4.000	3 3/4"-12 x 7.500	4.749	---	1.000	1.485	1.000	3.219	3.594	.140	---	.375	6.500	3/4	.625	2.000	1.500	.594	.750	---	.500	1.500	5.000	1.000	6.250	3.250	4.879	.500	2.250	8.500	3.375	9.375		

FILE: MH25S2.dwg REV: 04-03-07