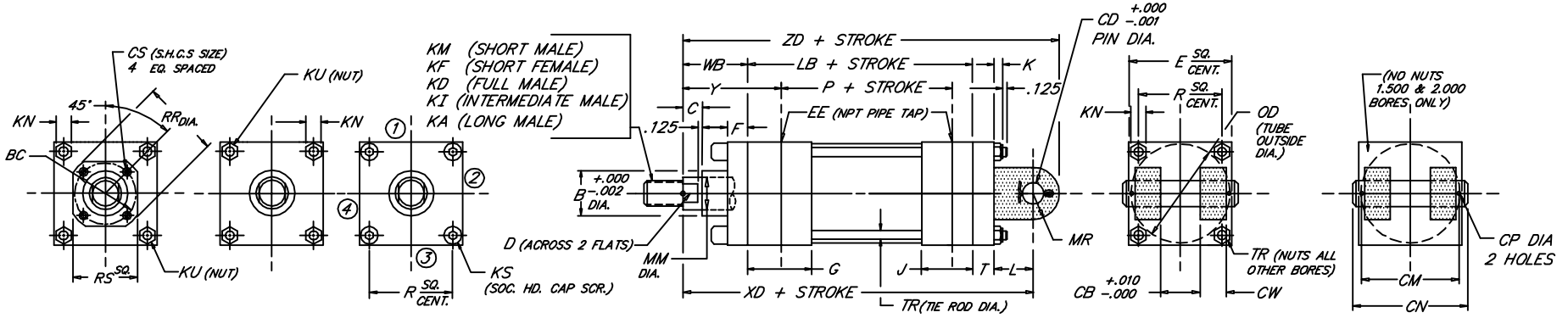
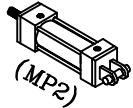


CAP DETACHABLE CLEVIS

Heavy Duty Steel Air Cylinder

Peninsular Mounting Style: **MH 24**



1.30

BORE	ROD					ROD THREAD X LENGTH																	NPT											D	E	EE	F	G	J	K	KN	KS	KU	L	LB	MR	OD	P	R	RR	RS	T	TR	WB	XD	Y	ZD
	MM	KM & KF	KD	KI	KA	B	BC	C	CB	CD	CM	CN	CP	CS	CW	EE	F	G	J	K	KN	KS	KU	L	LB	MR	OD	P	R	RR	RS	T	TR																								
1.500	.625	7/16"-20 x .750	5/8"-18 x .750	1/2"-20 x .750	1/2"-20 x 1.125	1.124	---	.375	.765	.500	1.938	2.281	.106	---	.500	.875	2.000	3/8	.375	1.500	1.000	.312	.438	---	.250	.750	3.625	.625	1.750	2.335	1.428	---	---	.375	.250	1.000	5.750	1.875	6.375																		
	1.000	3/4"-16 x 1.125	1"-14 x 1.125	7/8"-14 x 1.125	7/8"-14 x 1.875	1.499	---	.500	.765	.500	1.938	2.281	.106	---	.500	.875	2.500	3/8	.375	1.500	1.000	.344	.500	---	.312	.750	3.625	.625	2.250	2.335	1.838	---	---	.375	.312	1.000	5.750	1.875	6.375																		
	1.375	1"-14 x 1.625	1 3/8"-12 x 1.625	1 1/4"-12 x 1.625	1 1/4"-12 x 2.500	1.999	---	.625	.765	.500	1.938	2.281	.106	---	.500	1.125	3.000	3/8	.375	1.500	1.000	.344	.500	.312	---	.750	3.750	.625	2.750	2.460	2.192	---	---	.375	.312	1.375	6.125	2.250	7.000																		
2.000	.625	7/16"-20 x .750	5/8"-18 x .750	1/2"-20 x .750	1/2"-20 x 1.125	1.124	---	.375	.765	.500	1.938	2.281	.106	---	.500	.875	2.000	3/8	.375	1.500	1.000	.312	.438	---	.250	.750	3.625	.625	1.750	2.335	1.428	---	---	.375	.250	1.000	5.875	1.875	6.500																		
	1.000	3/4"-16 x 1.125	1"-14 x 1.125	7/8"-14 x 1.125	7/8"-14 x 1.875	1.499	---	.500	.765	.500	1.938	2.281	.106	---	.500	.875	2.500	3/8	.375	1.500	1.000	.344	.500	.312	---	.750	3.625	.625	2.250	2.335	1.838	---	---	.375	.312	1.375	6.250	2.250	6.875																		
	1.375	1"-14 x 1.625	1 3/8"-12 x 1.625	1 1/4"-12 x 1.625	1 1/4"-12 x 2.500	1.999	---	.625	.765	.500	1.938	2.281	.106	---	.500	1.125	3.000	3/8	.375	1.500	1.000	.344	.500	.312	---	.750	3.750	.625	2.750	2.460	2.192	---	---	.375	.312	1.625	6.500	2.500	7.125																		
2.500	.625	7/16"-20 x .750	5/8"-18 x .750	1/2"-20 x .750	1/2"-20 x 1.125	1.124	---	.375	.765	.500	1.938	2.281	.106	---	.500	.875	2.000	3/8	.375	1.500	1.000	.312	.438	---	.250	.750	3.625	.625	1.750	2.335	1.428	---	---	.375	.250	1.000	5.875	1.875	6.500																		
	1.000	3/4"-16 x 1.125	1"-14 x 1.125	7/8"-14 x 1.125	7/8"-14 x 1.875	1.499	---	.500	.765	.500	1.938	2.281	.106	---	.500	.875	2.500	3/8	.375	1.500	1.000	.344	.500	.312	---	.750	3.625	.625	2.250	2.335	1.838	---	---	.375	.312	1.375	6.250	2.250	6.875																		
	1.750	1 1/4"-12 x 2.000	1 3/4"-12 x 2.000	1 1/2"-12 x 2.000	1 1/2"-12 x 3.000	2.374	---	.750	.765	.500	1.938	2.281	.106	---	.500	1.500	3.000	3/8	.375	1.500	1.000	.344	.500	.312	---	.750	3.750	.625	2.750	2.460	2.192	---	---	.375	.312	1.875	6.750	2.750	7.375																		
3.250	1.000	3/4"-16 x 1.125	1"-14 x 1.125	7/8"-14 x 1.125	7/8"-14 x 1.875	1.499	---	.500	.765	.500	1.938	2.281	.106	---	.500	.875	2.000	3/8	.375	1.500	1.000	.312	.438	---	.250	.750	3.625	.625	1.750	2.335	1.428	---	---	.375	.250	1.000	5.875	1.875	6.500																		
	1.375	1"-14 x 1.625	1 3/8"-12 x 1.625	1 1/4"-12 x 1.625	1 1/4"-12 x 2.500	1.999	---	.625	.765	.500	1.938	2.281	.106	---	.500	1.125	3.000	3/8	.375	1.500	1.000	.344	.500	.312	---	.750	3.625	.625	2.250	2.335	1.838	---	---	.375	.312	1.375	6.250	2.250	6.875																		
	1.750	1 1/4"-12 x 2.000	1 3/4"-12 x 2.000	1 1/2"-12 x 2.000	1 1/2"-12 x 3.000	2.374	---	.750	.765	.500	1.938	2.281	.106	---	.500	1.500	3.000	3/8	.375	1.500	1.000	.344	.500	.312	---	.750	3.750	.625	2.750	2.460	2.192	---	---	.375	.312	1.625	6.500	2.500	7.125																		
4.000	1.000	3/4"-16 x 1.125	1"-14 x 1.125	7/8"-14 x 1.125	7/8"-14 x 1.875	1.499	2.562	.500	.765	.500	1.938	2.281	.106	---	.500	.875	2.000	3/8	.375	1.500	1.000	.312	.438	---	.250	.750	3.625	.625	1.750	2.335	1.428	---	---	.375	.250	1.000	5.875	1.875	6.500																		
	1.375	1"-14 x 1.625	1 3/8"-12 x 1.625	1 1/4"-12 x 1.625	1 1/4"-12 x 2.500	1.999	2.562	.625	.765	.500	1.938	2.281	.106	---	.500	1.125	3.000	3/8	.375	1.500	1.000	.344	.500	.312	---	.750	3.625	.625	2.250	2.335	1.838	---	---	.375	.312	1.375	6.250	2.250	6.875																		
	1.750	1 1/4"-12 x 2.000	1 3/4"-12 x 2.000	1 1/2"-12 x 2.000	1 1/2"-12 x 3.000	2.374	2.562	.750	.765	.500	1.938	2.281	.106	---	.500	1.500	3.000	3/8	.375	1.500	1.000	.344	.500	.312	---	.750	3.750	.625	2.750	2.460	2.192	---	---	.375	.312	1.625	6.500	2.500	7.125																		
5.000	1.000	3/4"-16 x 1.125	1"-14 x 1.125	7/8"-14 x 1.125	7/8"-14 x 1.875	1.499	2.562	.500	.765	.500	1.938	2.281	.106	---	.500	.875	2.000	3/8	.375	1.500	1.000	.312	.438	---	.250	.750	3.625	.625	1.750	2.335	1.428	---	---	.375	.250	1.000	5.875	1.875	6.500																		
	1.375	1"-14 x 1.625	1 3/8"-12 x 1.625	1 1/4"-12 x 1.625	1 1/4"-12 x 2.500	1.999	2.562	.625	.765	.500	1.938	2.281	.106	---	.500	1.125	3.000	3/8	.375	1.500	1.000	.344	.500	.312	---	.750	3.625	.625	2.250	2.335	1.838	---	---	.375	.312	1.375	6.250	2.250	6.875																		
	1.750	1 1/4"-12 x 2.000	1 3/4"-12 x 2.000	1 1/2"-12 x 2.000	1 1/2"-12 x 3.000	2.374	2.562	.750	.765	.500	1.938	2.281	.106	---	.500	1.500	3.000	3/8	.375	1.500	1.000	.344	.500	.312	---	.750	3.750	.625	2.750	2.460	2.192	---	---	.375	.312	1.625	6.500	2.500	7.125																		
6.000	1.000	3/4"-16 x 1.125	1"-14 x 1.125	7/8"-14 x 1.125	7/8"-14 x 1.875	1.499	2.562	.500	.765	.500	1.938	2.281	.106	---	.500	.875	2.000	3/8	.375	1.500	1.000	.312	.438	---	.250	.750	3.625	.625	1.750	2.335	1.428	---	---	.375	.250	1.000	5.875	1.875	6.500																		
	1.375	1"-14 x 1.625	1 3/8"-12 x 1.625	1 1/4"-12 x 1.625	1 1/4"-12 x 2.500	1.999	2.562	.625	.765	.500	1.938	2.281	.106	---	.500	1.125	3.000	3/8	.375	1.500	1.000	.344	.500	.312	---	.750	3.625	.625	2.250	2.335	1.838	---	---	.375	.312	1.375	6.250	2.250	6.875																		
	1.750	1 1/4"-12 x 2.000	1 3/4"-12 x 2.000	1 1/2"-12 x 2.000	1 1/2"-12 x 3.000	2.374	2.562	.750	.765	.500	1.938	2.281	.106	---	.500	1.500	3.000	3/8	.375	1.500	1.000	.344	.500	.312	---	.750	3.750	.625	2.750	2.460	2.192	---	---	.375	.312	1.625	6.500	2.500	7.125																		

NUMBER OF HOLES

FILE: MH24S2.dwg REV: 09-25-06