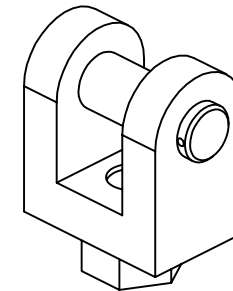
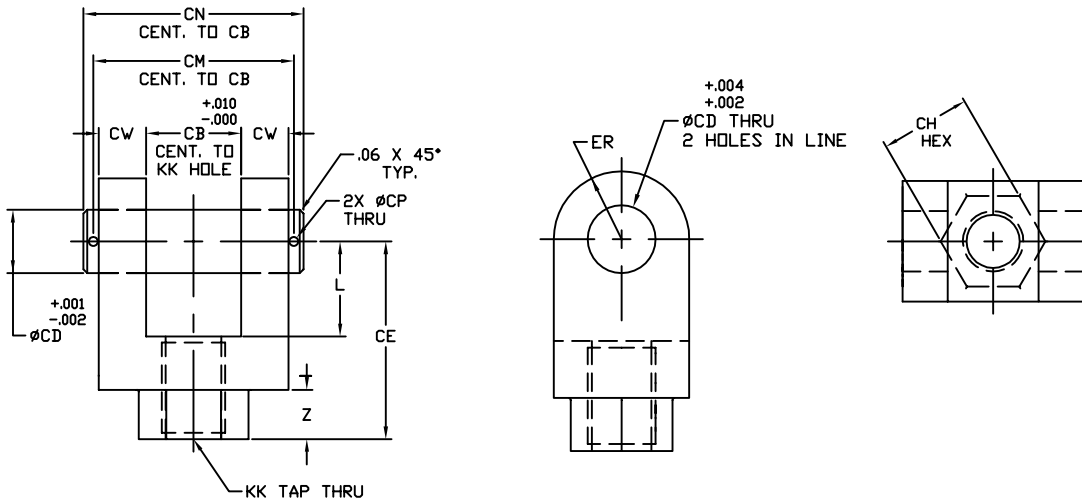


Standard NFPA Rod-End Clevis

Model - 86

(with Pin Attached)



THIS ROD END CLEVIS HAS

- (1) STRAIGHT CLEVIS PIN &
- (2) COTTER PINS INCLUDED

PART No.	CB	CD	CE	CH	CM	CN	CP	CW	L	KK	ER	Z
C1150-86										7/16-20		
C1150-86G	.765	.500	1.500	1.000	1.938	2.281	.106	.500	.750	1/2-20	.500	.38
C1150-86P										5/8-18		
C1200-86										3/4-16		
C1200-86G	1.265	.750	2.375	1.250	2.719	3.094	.140	.625	1.250	7/8-14	.750	.56
C1400-86										1-14		
C1400-86G	1.515	1.000	3.125	1.500	3.219	3.594	.140	.750	1.500	1 1/4-12	1.000	.78
C1600-86										1 1/4-12		
C1600-86G	2.031	1.375	4.125	2.000	4.250	4.656	.173	1.000	2.125	1 1/2-12	1.375	.97
C1800-86										1 1/2-12		
C1800-86G	2.531	1.750	4.500	2.375	5.250	5.656	.173	1.250	2.25	1 3/4-12	1.750	.91
C1900-86										1 7/8-12		
C1900-86G	2.531	2.000	5.500	2.938	5.281	5.719	.204	1.250	2.500	2 1/4-12	2.000	1.25
C1901-86										2 1/4-12		
C1901-86G	3.031	2.500	6.500	3.500	6.313	6.781	.219	1.500	3.000	2 1/4-12	2.500	1.50
C1902-86										2 1/2-12		
C1903-86	3.031	3.000	6.750	3.875	6.344	6.844	.250	1.500	3.250	3-12	2.750	1.50
C1904-86										3 1/4-12		
C1904-86G	4.031	3.500	8.500	5.000	8.406	8.969	.312	2.000	4.000	3 1/4-12	3.500	2.00
C1906-86										4-12		
C1906-86G	4.531	4.000	10.000	6.125	9.406	9.969	.312	2.250	4.500	4-12	4.000	2.50
C1908-86										5-12		
C1908-86G	6.031	5.000	12.750	7.500	12.406	12.969	.312	3.000	5.750	5-12	5.000	3.00

8.02