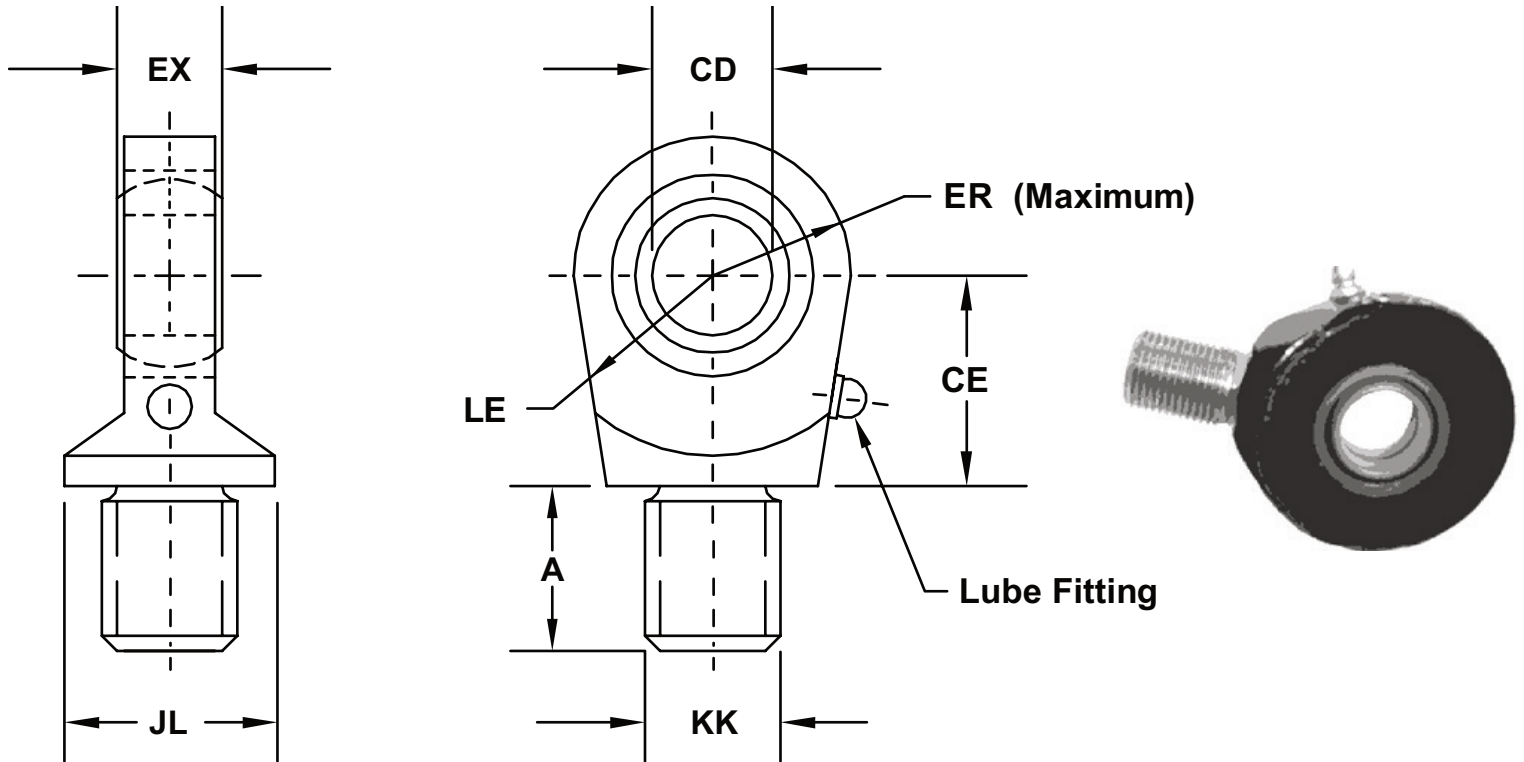


# Standard NFPA Spherical Rod Eye

Model - 74



Part No.	CD	A -.0005	CE	EX	ER	LE	KK	JL	LOAD CAP
C1150-74	.5000	.68	.87	.43	.87	.75	7/16" - 20	.87	2,600
C1200-74	.7500	1.00	1.25	.65	1.25	1.06	3/4" - 16	1.31	9,400
C1400-74	1.0000	1.50	1.87	.87	1.37	1.43	1" - 14	1.50	16,800
C1600-74	1.3750	2.00	2.12	1.18	1.18	1.87	1 1/4" - 12	2.00	28,600
C1800-74	1.7500	2.12	2.50	1.53	2.18	2.12	1 1/2" - 12	2.25	43,000
C1900-74	2.0000	2.87	2.75	1.75	2.62	2.50	1 7/8" - 12	2.75	51,000