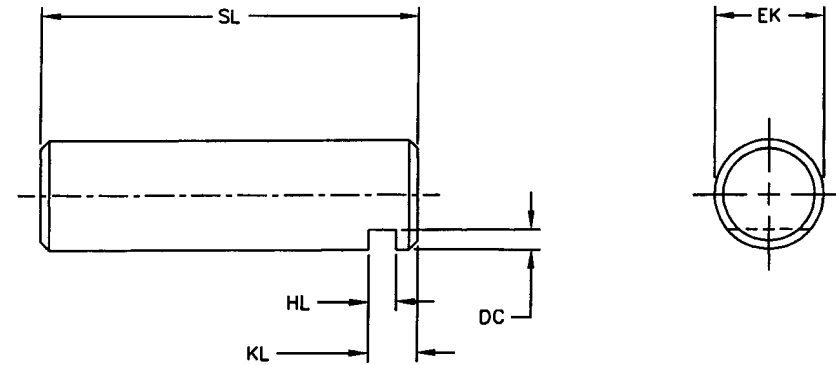


PLAIN PIVOT PIN - LOCKING PLATE TYPE

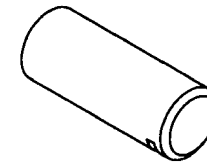
PENINSULAR[®] CYLINDER COMPANY

METRIC HIGH PRESSURE HYDRAULIC CYLINDER ACCESSORIES
 LARGE BORE SERIES - ISO 6020-3
 WORKING PRESSURE - 160 BAR (2320 PSI)
 RATED PRESSURE - 250 BAR (3625 PSI)



DIMENSIONS IN MILLIMETERS

ORDER NUMBER	TYPICAL BORE DIAMETER	NOMINAL FORCE (N)	DC (MIN)	EK F8	HL +0.3 +0.1	KL +0.0 -1.0	SL +1.0 -1.0	WEIGHT (KG)
IHP250-66L	250	800 000	15.0	90.0	15.0	35.0	230.0	11.48
IHP320-66L	320	1 250 000	15.0	110.0	15.0	35.0	270.0	20.14
IHP360-66L	360	1 600 000	22.5	125.0	18.0	40.0	310.0	29.86
IHP400-66L	400	2 000 000	25.0	140.0	18.0	40.0	340.0	41.08
IHP500-66L	500	3 200 000	30.0	180.0	20.0	45.0	425.0	84.89



ACCESSORY MOUNTING DIMENSIONS CONFORM TO ISO 13726
 ACCESSORIES ARE DESIGNED FOR, BUT NOT LIMITED TO, ISO 6020-3 HYDRAULIC CYLINDERS

27650 Groesbeck Highway Roseville Michigan 48066-2759 Telephone: 586-775-7211 Fax: 586-775-4545
 Toll Free: 800-526-7968 Internet: <http://www.peninsularcylinders.com> Email: sales@peninsularcylinders.com

10.05

REV. 2/09/2010