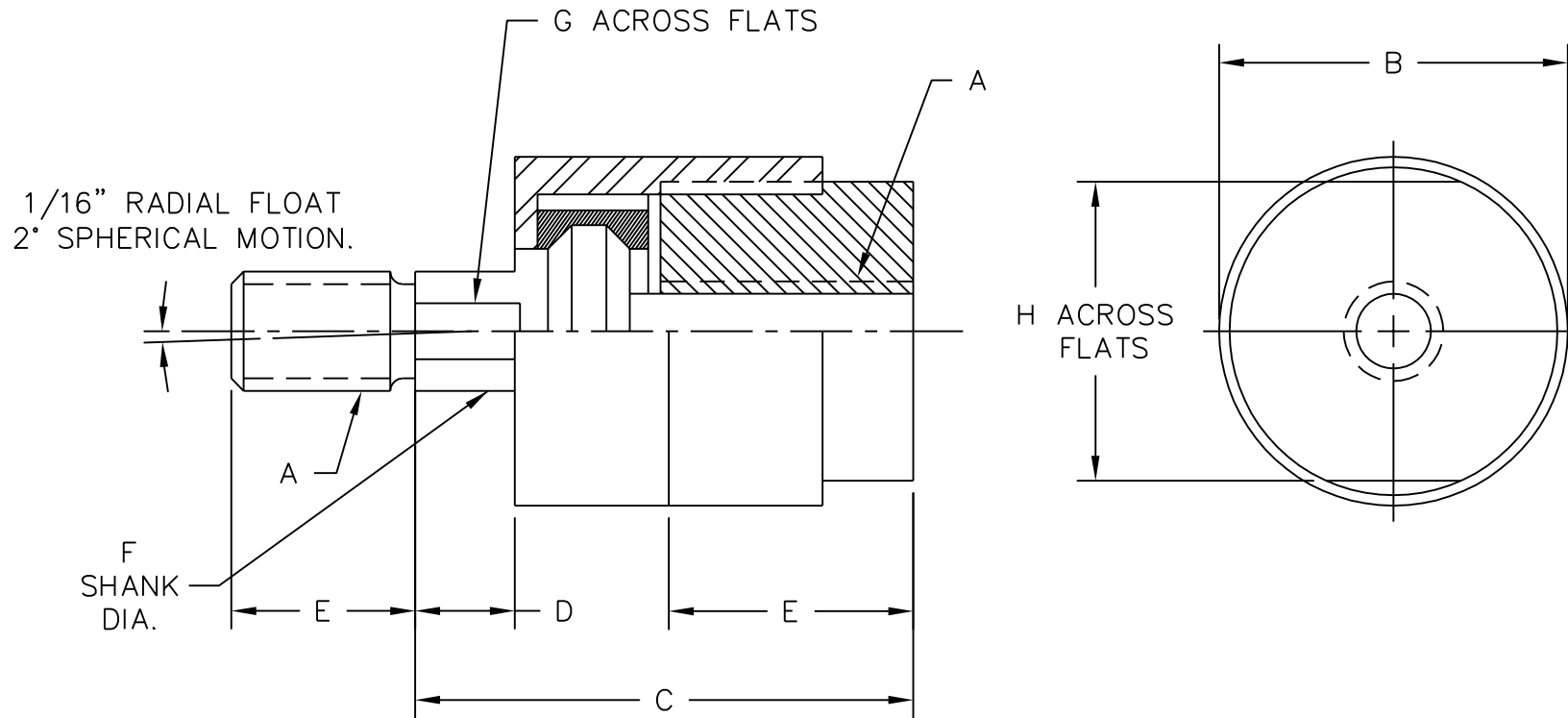


# METRIC ALIGNMENT COUPLER



PENINSULAR PART #	A	B	C	D	E	F	G	H	MAX. PULL AT YIELD (kn)
IF100-79	M10 x 1.25	31.7	50.8	12.7	20.0	15.8	14.2	29.0	36
IF120-79	M12 x 1.25	31.7	50.8	12.7	20.0	15.8	14.2	29.0	44
IF140-79	M14 x 1.50	31.7	50.8	12.7	20.0	15.8	14.2	29.0	44
IF160-79	M16 x 1.50	31.7	50.8	12.7	20.0	15.8	14.2	29.0	83
IF200-79	M20 x 1.50	44.4	59.4	8.0	28.5	24.5	22.2	38.1	150
IF270-79	M27 x 2.00	63.5	73.0	11.0	41.0	35.0	32.0	57.0	242
IF360-79	M36 x 2.00	82.5	111.0	20.6	57.0	44.5	38.0	76.0	528



## PENINSULAR® CYLINDER COMPANY

27650 Groesbeck Highway Roseville Michigan 48066-2759 Telephone: 586-775-7211 Fax: 586-775-4545  
 Toll Free: 800-526-7968 Internet: <http://www.peninsularcylinders.com> Email: [sales@peninsularcylinders.com](mailto:sales@peninsularcylinders.com)

REV. 14 JAN 2003

