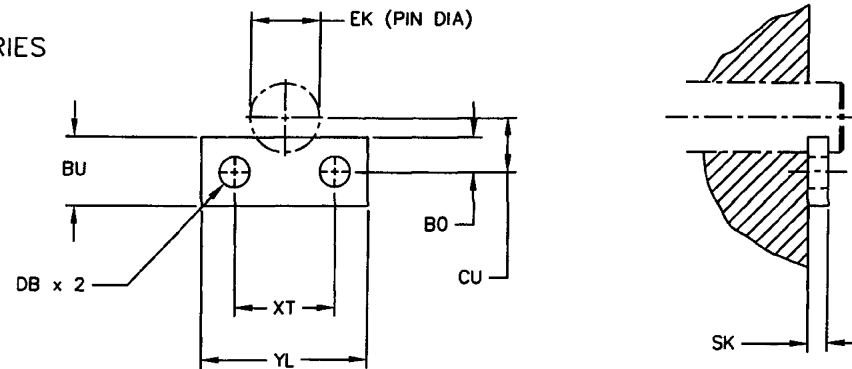


LOCKING PLATE FOR PLAIN PIVOT PIN

PENINSULAR[®] CYLINDER COMPANY

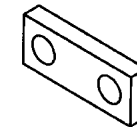
METRIC HIGH PRESSURE HYDRAULIC CYLINDER ACCESSORIES
 LARGE BORE SERIES – ISO 6020-3
 WORKING PRESSURE – 160 BAR (2320 PSI)
 RATED PRESSURE – 250 BAR (3625 PSI)



LOCKING PLATE (-67) SUPPLIED WITH (2) RETAINING SCREWS

DIMENSIONS IN MILLIMETERS

ORDER NUMBER	TYPICAL BORE DIAMETER	TYPICAL PIN DIAMETER	NOMINAL FORCE (N)	BO JS14	BU (MAX)	CU JS13	DB H13	EK (REF)	SK +0.0 -0.2	YL (MIN)	XT JS13	SOCKET HEAD CAP SCREW (CLASS 8.8) 2 REQ'D	WEIGHT (KG)
IHP250-67	250	90.0	800 000	25.0	50.0	56.0	13.5	90.0	15.0	130.0	100.0	M12-1.75x35	0.76
IHP320-67	320	110.0	1 250 000	25.0	50.0	66.0	13.5	110.0	15.0	150.0	120.0	M12-1.75x35	0.88
IHP360-67	360	125.0	1 600 000	30.0	60.0	72.0	15.5	125.0	18.0	155.0	120.0	M14-2.0x40	1.31
IHP400-67	400	140.0	2 000 000	30.0	60.0	77.0	15.5	140.0	18.0	170.0	140.0	M14-2.0x40	1.44
IHP500-67	500	180.0	3 200 000	30.0	60.0	92.0	17.5	180.0	20.0	215.0	180.0	M16-2.0x45	2.02



ACCESSORY MOUNTING DIMENSIONS CONFORM TO ISO 13726

ACCESSORIES ARE DESIGNED FOR, BUT NOT LIMITED TO, ISO 6020-3 HYDRAULIC CYLINDERS

27650 Groesbeck Highway Roseville Michigan 48066-2759 Telephone: 586-775-7211 Fax: 586-775-4545
 Toll Free: 800-526-7968 Internet: <http://www.peninsularcylinders.com> Email: sales@peninsularcylinders.com

10.16

REV. 02/09/2010