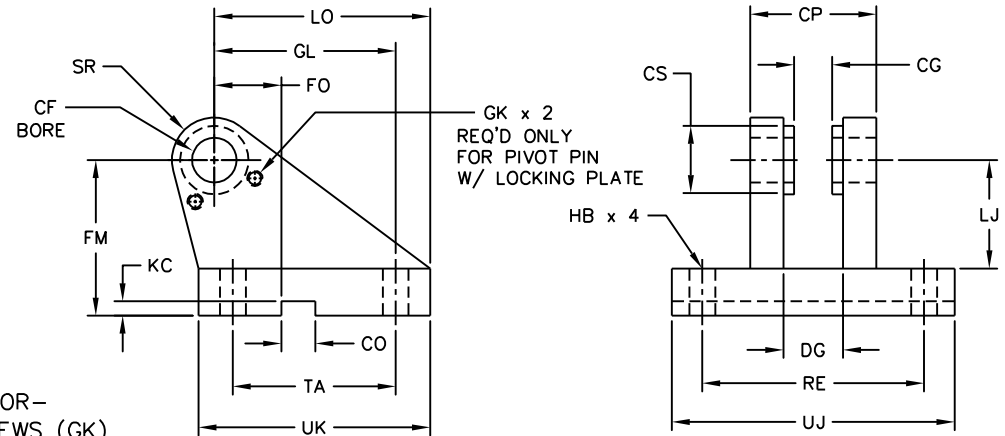


CLEVIS BRACKET FOR SPHERICAL PLAIN BEARING

PENINSULAR[®] CYLINDER COMPANY

METRIC HIGH PRESSURE HYDRAULIC CYLINDER ACCESSORIES
SMALL BORE SERIES - ISO 6020-2
WORKING PRESSURE - 160 BAR (2320 PSI)
RATED PRESSURE - 250 BAR (3625 PSI)

NOTE: CLEVIS BRACKET (-72) WILL BE SUPPLIED WITH
THE APPROPRIATE ACCESSORIES AS FOLLOWS:
PIVOT PIN-COTTER PIN TYPE (-72P), PIVOT PIN-SNAP RING TYPE (-72PG), -OR-
PIVOT PIN-LOCKING PLATE TYPE (-72PL) & LOCKING PLATE (-67) & (2) SCREWS (GK)



DIMENSIONS IN MILLIMETERS

ORDER NUMBER	TYPICAL BORE DIAMETER	TYPICAL PIN DIAMETER	NOMINAL FORCE (N)	CF K7	CG +3.0 +1.0	CO N9	CP H14	CS (MAX)	DG +2.0 -0.0	FO JS14	FM JS11	GK	GL JS13	HB	KC +0.3 -0.0	LJ	LO	RE JS13	SR (MAX)	TA JS13	UJ	UK	WEIGHT (KG)
IHP25-72	25	12.0	8 000	12.0	10.0	10.0	30.0	16.0	12.0	16.0	40.0	M6	46.0	9.0	3.3	29.0	56.0	55.0	12.0	40.0	75.0	60.0	0.52
IHP32-72	32	16.0	12 500	16.0	14.0	16.0	40.0	22.0	16.0	18.0	50.0	M6	61.0	11.0	4.3	38.0	74.0	70.0	16.0	55.0	95.0	80.0	1.05
IHP40-72	40	20.0	20 000	20.0	16.0	16.0	50.0	25.0	19.0	20.0	55.0	M6	64.0	14.0	4.3	40.0	80.0	85.0	20.0	58.0	120.0	90.0	1.72
IHP50-72	50	25.0	32 000	25.0	20.0	25.0	60.0	30.0	24.0	22.0	65.0	M6	78.0	16.0	5.4	49.0	98.0	100.0	25.0	70.0	140.0	110.0	2.72
IHP63-72	63	30.0	50 000	30.0	22.0	25.0	70.0	35.0	26.0	24.0	85.0	M6	97.0	18.0	5.4	63.0	120.0	115.0	30.0	90.0	160.0	135.0	5.15
IHP80-72	80	40.0	80 000	40.0	28.0	36.0	80.0	47.0	32.0	24.0	100.0	M8	123.0	22.0	8.4	73.0	148.0	135.0	40.0	120.0	190.0	170.0	9.30
IHP100-72	100	50.0	125 000	50.0	35.0	36.0	100.0	58.0	41.0	35.0	125.0	M8	155.0	30.0	8.4	92.0	190.0	170.0	50.0	145.0	240.0	215.0	18.3
IHP125-72	125	60.0	200 000	60.0	44.0	50.0	120.0	68.0	50.0	35.0	150.0	M10	187.0	39.0	11.4	110.0	225.0	200.0	60.0	185.0	270.0	260.0	35.0
IHP160-72	160	80.0	320 000	80.0	55.0	50.0	160.0	90.0	65.0	35.0	190.0	M10	255.0	45.0	11.4	142.0	295.0	240.0	80.0	260.0	320.0	340.0	63.0
IHP200-72	200	100.0	500 000	100.0	70.0	63.0	200.0	111.0	80.0	35.0	210.0	M10	285.0	48.0	12.4	152.0	335.0	300.0	100.0	300.0	400.0	400.0	109.0

ACCESSORY MOUNTING DIMENSIONS CONFORM TO ISO 8133

ACCESSORIES ARE DESIGNED FOR, BUT NOT LIMITED TO, ISO 6020-2 HYDRAULIC CYLINDERS



27650 Groesbeck Highway Roseville Michigan 48066-2759 Telephone: 586-775-7211 Fax: 586-775-4545
Toll Free: 800-526-7968 Internet: <http://www.peninsularcylinders.com> Email: sales@peninsularcylinders.com
REL. 07-08-02

