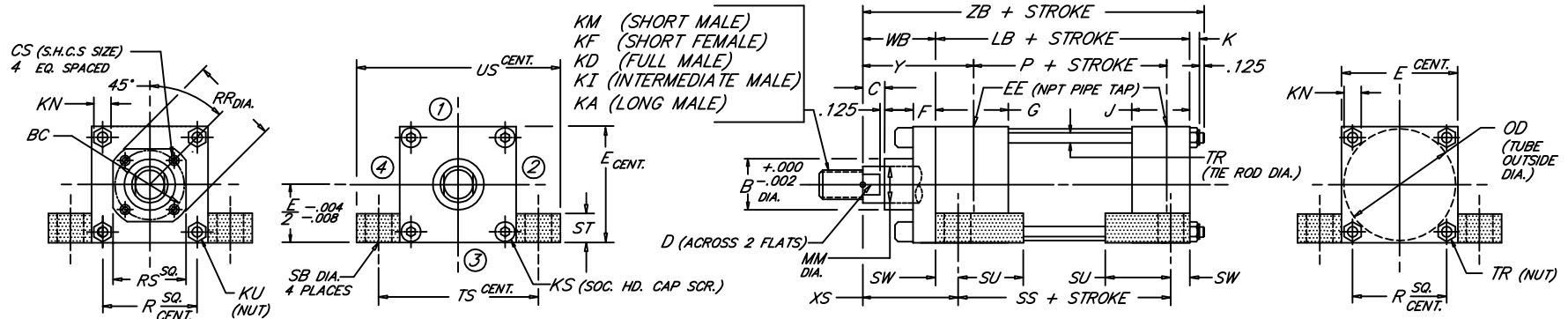


FOOT SIDE LUGS

Heavy Duty Steel Air Cylinder

Peninsular Mounting Style: **MH 1**



1.01

BORE	ROD		ROD THREAD X LENGTH					NPT														TR	TS	US	WB	XS	Y	ZB								
	MM	KM & KF	KD	KI	KA	B	BC	C	CS	D	E	EE	F	G	J	K	KN	KS	KU	LB	OD								P	R	RR	RS	SB	SS	ST	SU
1.500	.625	7/16"-20 x .750	5/8"-18 x .750	1/2"-20 x .750	1/2"-20 x 1.125	1.124	---	.375	.500	2.000	3/8	.375	1.500	1.000	.312	.438	.250	---	3.625	1.750	2.335	1.428	---	---	.438	2.875	.500	.938	.375	.250	2.750	3.500	1.000	1.375	1.875	5.062
	1.000	3/4"-16 x 1.125	1"-14 x 1.125	7/8"-14 x 1.125	7/8"-14 x 1.875	1.499	---	.500	.875	2.500	3/8	.375	1.500	1.000	.344	.500	.312	---	3.625	2.250	2.335	1.838	---	---	.438	2.875	.500	.938	.375	.312	3.250	4.000	1.000	1.375	1.875	5.094
2.000	.625	7/16"-20 x .750	5/8"-18 x .750	1/2"-20 x .750	1/2"-20 x 1.125	1.124	---	.375	.500	2.500	3/8	.375	1.500	1.000	.344	.500	.312	---	3.625	2.250	2.335	1.838	---	---	.438	2.875	.500	.938	.375	.312	3.250	4.000	1.000	1.375	1.875	5.094
	1.000	3/4"-16 x 1.125	1"-14 x 1.125	7/8"-14 x 1.125	7/8"-14 x 1.875	1.499	---	.500	.875	3.000	3/8	.375	1.500	1.000	.344	.500	.312	---	3.750	2.750	2.460	2.192	---	---	.438	3.000	.500	.938	.375	.312	3.750	4.500	1.000	1.375	1.875	5.594
2.500	.625	7/16"-20 x .750	5/8"-18 x .750	1/2"-20 x .750	1/2"-20 x 1.125	1.124	---	.375	.500	3.000	3/8	.375	1.500	1.000	.344	.500	.312	---	3.750	2.750	2.460	2.192	---	---	.438	3.000	.500	.938	.375	.312	3.750	4.500	1.000	1.375	1.875	5.844
	1.000	3/4"-16 x 1.125	1"-14 x 1.125	7/8"-14 x 1.125	7/8"-14 x 1.875	1.499	---	.500	.875	3.500	3/8	.375	1.500	1.000	.344	.500	.312	---	4.000	3.000	2.750	2.500	---	---	.438	3.000	.500	.938	.375	.312	4.000	5.000	1.000	1.375	1.875	6.094
3.250	.625	7/16"-20 x .750	5/8"-18 x .750	1/2"-20 x .750	1/2"-20 x 1.125	1.124	---	.375	.500	3.500	1/2	.625	1.750	1.250	.438	.562	.375	---	4.250	3.500	2.750	2.758	---	---	.562	3.250	.750	1.250	.500	.375	4.750	5.750	1.000	1.375	1.875	6.188
	1.000	3/4"-16 x 1.125	1"-14 x 1.125	7/8"-14 x 1.125	7/8"-14 x 1.875	1.499	---	.500	.875	4.000	1/2	.625	1.750	1.250	.438	.562	.375	---	4.500	3.750	2.750	2.758	---	---	.562	3.250	.750	1.250	.500	.375	5.000	6.000	1.000	1.375	1.875	6.438
4.000	.625	7/16"-20 x .750	5/8"-18 x .750	1/2"-20 x .750	1/2"-20 x 1.125	1.124	---	.375	.500	4.000	1/2	.625	1.750	1.250	.438	.562	.375	---	4.500	3.750	2.750	3.323	3.734	3.000	.562	3.250	.750	1.250	.500	.375	5.500	6.500	1.000	1.375	1.875	6.688
	1.000	3/4"-16 x 1.125	1"-14 x 1.125	7/8"-14 x 1.125	7/8"-14 x 1.875	1.499	2.562	.500	.250	4.500	1/2	.625	1.750	1.250	.438	.562	.375	---	4.750	4.000	2.750	3.323	3.734	3.000	.562	3.250	.750	1.250	.500	.375	6.000	7.000	1.000	1.375	1.875	6.888
5.000	.625	7/16"-20 x .750	5/8"-18 x .750	1/2"-20 x .750	1/2"-20 x 1.125	1.124	---	.375	.500	5.000	1/2	.625	1.750	1.250	.438	.562	.375	---	5.000	4.000	3.000	4.101	4.312	3.750	.812	3.125	1.000	1.562	.6875	.500	6.875	8.250	1.000	1.375	1.875	7.094
	1.000	3/4"-16 x 1.125	1"-14 x 1.125	7/8"-14 x 1.125	7/8"-14 x 1.875	1.499	2.562	.500	.250	5.500	1/2	.625	1.750	1.250	.438	.562	.375	---	5.250	4.250	3.000	4.101	4.312	3.750	.812	3.125	1.000	1.562	.6875	.500	7.250	8.750	1.000	1.375	1.875	7.294
6.000	.625	7/16"-20 x .750	5/8"-18 x .750	1/2"-20 x .750	1/2"-20 x 1.125	1.124	---	.375	.500	6.000	3/4	.625	2.000	1.500	.594	.750	---	---	5.000	4.250	3.250	4.879	4.312	3.750	.812	3.125	1.000	1.562	.6875	.500	7.875	9.250	1.000	1.375	1.875	7.969
	1.000	3/4"-16 x 1.125	1"-14 x 1.125	7/8"-14 x 1.125	7/8"-14 x 1.875	1.499	2.562	.500	.250	6.500	3/4	.625	2.000	1.500	.594	.750	---	---	5.250	4.500	3.250	4.879	4.312	3.750	.812	3.125	1.000	1.562	.6875	.500	8.250	9.750	1.000	1.375	1.875	8.169