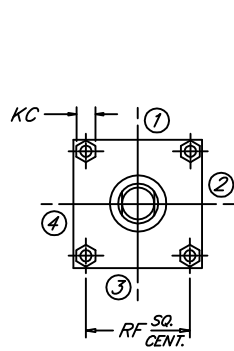


# HEAD TIE ROD EXTENDED

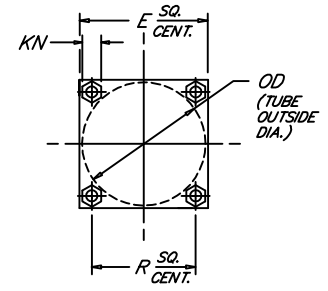
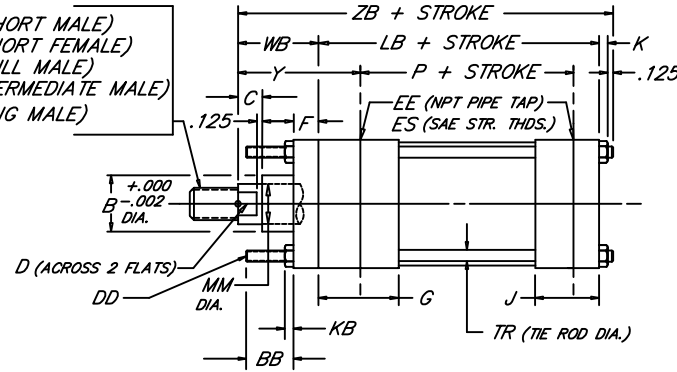
Peninsular Mounting Style: **LH 8**

Low Pressure Steel Hydraulic Cylinder

BORE	WORKING P.S.I.	RATED P.S.I.
1.50	1500	2500
2.00	1500	2500
2.50	1000	1500
3.25	1000	1500
4.00	1000	1500
5.00	800	1200
6.00	800	1200



KM (SHORT MALE)  
 KF (SHORT FEMALE)  
 KD (FULL MALE)  
 KI (INTERMEDIATE MALE)  
 KA (LONG MALE)



BORE	ROD					B	BB	C	D	DD	NPT/SAE			F	G	J	K	KB	KC	KN	LB	OD	P	R	RF	TR	WB	Y	ZB
	MM	KM & KF	KD	KI	KA						E	EE	ES																
1.500	.625	7/16"-20 x .750	5/8"-18 x .750	1/2"-20 x .750	1/2"-20 x 1.125	1.124	1.000	.375	.500	1/4"-28	2.000	3/8	-6	.375	1.500	1.000	.344	.218	.438	.500	3.625	1.750	2.335	1.478	1.428	.312	1.000	1.875	5.094
	1.000	3/4"-16 x 1.125	1"-14 x 1.125	7/8"-14 x 1.125	7/8"-14 x 1.875	1.499		.500	.875																		1.375	2.250	5.469
2.000	.625	7/16"-20 x .750	5/8"-18 x .750	1/2"-20 x .750	1/2"-20 x 1.125	1.124		.375	.500	5/16"-24	2.500	3/8	-6	.375	1.500	1.000	.406	.250	.500	.562	3.625	2.375	2.335	1.966	1.838	.375	1.000	1.875	5.156
	1.000	3/4"-16 x 1.125	1"-14 x 1.125	7/8"-14 x 1.125	7/8"-14 x 1.875	1.499	1.125	.500	.875																	1.375	2.250	5.531	
	1.375	1"-14 x 1.625	3/8"-12 x 1.625	1 1/4"-12 x 1.625	1 1/4"-12 x 2.500	1.999		.625	1.125																		1.625	2.500	5.781
2.500	.625	7/16"-20 x .750	5/8"-18 x .750	1/2"-20 x .750	1/2"-20 x 1.125	1.124		.375	.500	5/16"-24	3.000	3/8	-6	.375	1.500	1.000	.406	.250	.500	.562	3.750	2.875	2.460	2.320	2.192	.375	1.000	1.875	5.281
	1.000	3/4"-16 x 1.125	1"-14 x 1.125	7/8"-14 x 1.125	7/8"-14 x 1.875	1.499	1.125	.500	.875																	1.375	2.250	5.656	
	1.375	1"-14 x 1.625	3/8"-12 x 1.625	1 1/4"-12 x 1.625	1 1/4"-12 x 2.500	1.999		.625	1.125																		1.625	2.500	5.906
	1.750	1 1/4"-12 x 2.000	3/4"-12 x 2.000	1 1/2"-12 x 2.000	1 1/2"-12 x 3.000	2.374		.750	1.500																		1.875	2.750	6.156
3.250	1.000	3/4"-16 x 1.125	1"-14 x 1.125	7/8"-14 x 1.125	7/8"-14 x 1.875	1.499		.500	.875	3/8"-24	3.750	1/2	-8	.625	1.750	1.250	.531	.328	.562	.750	4.250	3.625	2.750	2.942	2.758	.500	1.375	2.375	6.281
	1.375	1"-14 x 1.625	3/8"-12 x 1.625	1 1/4"-12 x 1.625	1 1/4"-12 x 2.500	1.999	1.375	.625	1.125																	1.625	2.625	6.531	
	1.750	1 1/4"-12 x 2.000	3/4"-12 x 2.000	1 1/2"-12 x 2.000	1 1/2"-12 x 3.000	2.374		.750	1.500																	1.875	2.875	6.781	
	2.000	1 1/2"-12 x 2.250	2"-12 x 2.250	2 1/2"-12 x 2.250	3 1/4"-12 x 2.250	2.624		.875	1.688																	2.000	3.000	6.906	
4.000	1.000	3/4"-16 x 1.125	1"-14 x 1.125	7/8"-14 x 1.125	7/8"-14 x 1.875	1.499		.500	.875	3/8"-24	4.500	1/2	-8	.625	1.750	1.250	.531	.328	.562	.750	4.250	4.375	2.750	3.469	3.323	.500	1.375	2.375	6.281
	1.375	1"-14 x 1.625	3/8"-12 x 1.625	1 1/4"-12 x 1.625	1 1/4"-12 x 2.500	1.999	1.375	.625	1.125																	1.625	2.625	6.531	
	1.750	1 1/4"-12 x 2.000	3/4"-12 x 2.000	1 1/2"-12 x 2.000	1 1/2"-12 x 3.000	2.374		.750	1.500																	1.875	2.875	6.781	
	2.000	1 1/2"-12 x 2.250	2"-12 x 2.250	2 1/2"-12 x 2.250	3 1/4"-12 x 2.250	2.624		.875	1.688																	2.000	3.000	6.906	
	2.500	1 7/8"-12 x 3.000	1 1/2"-12 x 3.000	2 1/4"-12 x 3.000	2 1/4"-12 x 4.500	3.124		1.000	2.062																	2.250	3.250	7.156	
5.000	1.000	3/4"-16 x 1.125	1"-14 x 1.125	7/8"-14 x 1.125	7/8"-14 x 1.875	1.499		.500	.875	1/2"-20	5.500	1/2	-8	.625	1.750	1.250	.656	.438	.750	.938	4.500	5.375	3.000	4.285	4.101	.625	1.375	2.375	6.656
	1.375	1"-14 x 1.625	3/8"-12 x 1.625	1 1/4"-12 x 1.625	1 1/4"-12 x 2.500	1.999	1.812	.625	1.125																	1.625	2.625	6.906	
	1.750	1 1/4"-12 x 2.000	3/4"-12 x 2.000	1 1/2"-12 x 2.000	1 1/2"-12 x 3.000	2.374		.750	1.500																	1.875	2.875	7.156	
	2.000	1 1/2"-12 x 2.250	2"-12 x 2.250	2 1/2"-12 x 2.250	3 1/4"-12 x 2.250	2.624		.875	1.688																	2.000	3.000	7.281	
	2.500	1 7/8"-12 x 3.000	1 1/2"-12 x 3.000	2 1/4"-12 x 3.000	2 1/4"-12 x 4.500	3.124		1.000	2.062																	2.250	3.250	7.531	
	3.000	2 1/4"-12 x 3.500	3"-12 x 3.500	2 3/4"-12 x 3.500	2 3/4"-12 x 5.500	3.749		1.000	2.625																	2.250	3.250	7.531	
6.000	1.375	1"-14 x 1.625	3/8"-12 x 1.625	1 1/4"-12 x 1.625	1 1/4"-12 x 2.500	1.999		.625	1.125	1/2"-20	6.500	3/4	-12	.750	2.000	1.500	.656	.438	.750	.938	5.000	6.375	3.250	4.992	4.879	.625	1.625	2.750	7.406
	1.750	1 1/4"-12 x 2.000	3/4"-12 x 2.000	1 1/2"-12 x 2.000	1 1/2"-12 x 3.000	2.374	1.812	.750	1.500																	1.875	3.000	7.656	
	2.000	1 1/2"-12 x 2.250	2"-12 x 2.250	2 1/2"-12 x 2.250	3 1/4"-12 x 2.250	2.624		.875	1.688																	2.000	3.125	7.781	
	2.500	1 7/8"-12 x 3.000	2 1/2"-12 x 3.000	2 1/4"-12 x 3.000	2 1/4"-12 x 4.500	3.124		1.000	2.062																	2.250	3.375	8.031	
	3.000	2 1/4"-12 x 3.500	3"-12 x 3.500	2 3/4"-12 x 3.500	2 3/4"-12 x 5.500	3.749		1.000	2.625																	2.250	3.375	8.031	
	3.500	2 1/2"-12 x 3.500	3 1/2"-12 x 3.500	3 1/4"-12 x 3.500	3 1/4"-12 x 6.500	4.249		1.000	3.000																	2.250	3.375	8.031	
	4.000	3"-12 x 4.000	4"-12 x 4.000	3 3/4"-12 x 4.000	3 3/4"-12 x 7.500	4.749		1.000	3.375																	2.250	3.375	8.031	

4.08

MIN. REQ'D