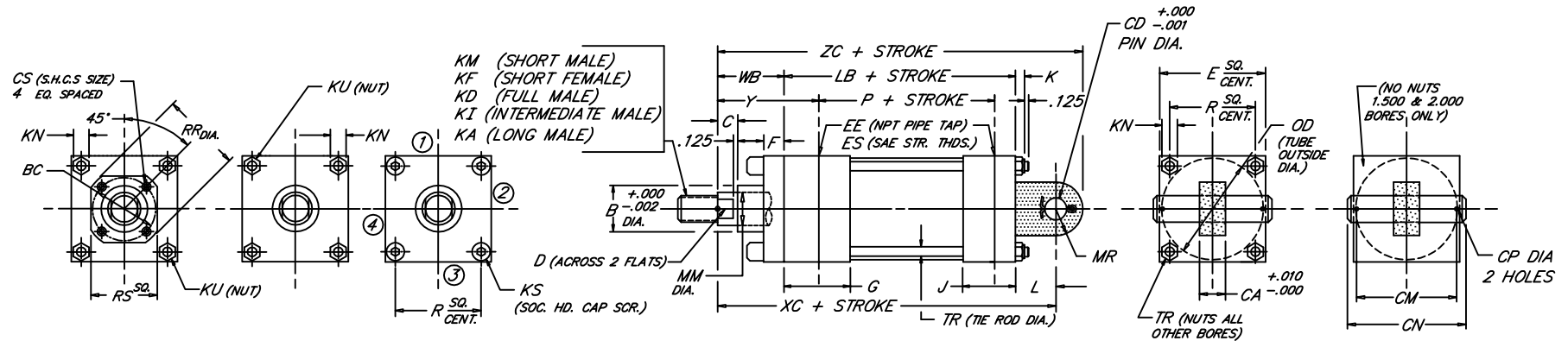


CAP FIXED EYE

Low Pressure Steel Hydraulic Cylinder

BORE	1.50	2.00	2.50	3.25	4.00	5.00	6.00
WORKING P.S.I.	1500	1500	1000	1000	1000	800	800
RATED P.S.I.	2500	2500	1500	1500	1500	1200	1200

Peninsular Mounting Style: **LH 25**



4.25

BORE	ROD					NPT/SAE																																
	MM	ROD THREAD X LENGTH				B	BC	C	CA	CD	CM	CN	CP	CS	D	E	EE	ES	F	G	J	K	KN	KS	KU	L	LB	MR	OD	P	R	RR	RS	TR	WB	XC	Y	ZC
1.500	.625	7/16-20 x .750	5/8-18 x .750	1/2-20 x .750	1/2-20 x 1.125	1.124	---	.375	.735	.500	1.938	2.281	.106	---	.500	2.000	3/8	-6	.375	1.500	1.000	.344	.500	---	.312	.750	3.625	.500	1.750	2.335	1.478	---	---	.312	1.000	5.375	1.875	5.875
	1.000	3/4-16 x 1.125	1-14 x 1.125	7/8-14 x 1.125	7/8-14 x 1.875	1.499	---	.500	.735	.500	1.938	2.281	.106	---	.875	2.500	3/8	-6	.375	1.500	1.000	.406	.562	---	.375	.750	3.625	.500	2.375	2.335	1.966	---	---	.375	1.000	5.375	1.875	5.875
2.000	.625	7/16-20 x .750	5/8-18 x .750	1/2-20 x .750	1/2-20 x 1.125	1.124	---	.375	.735	.500	1.938	2.281	.106	---	.500	2.000	3/8	-6	.375	1.500	1.000	.344	.500	---	.312	.750	3.625	.500	1.750	2.335	1.478	---	---	.312	1.000	5.375	1.875	5.875
	1.000	3/4-16 x 1.125	1-14 x 1.125	7/8-14 x 1.125	7/8-14 x 1.875	1.499	---	.500	.735	.500	1.938	2.281	.106	---	.875	2.500	3/8	-6	.375	1.500	1.000	.406	.562	---	.375	.750	3.625	.500	2.375	2.335	1.966	---	---	.375	1.000	5.375	1.875	5.875
2.500	.625	7/16-20 x .750	5/8-18 x .750	1/2-20 x .750	1/2-20 x 1.125	1.124	---	.375	.735	.500	1.938	2.281	.106	---	.500	2.000	3/8	-6	.375	1.500	1.000	.344	.500	---	.312	.750	3.625	.500	1.750	2.335	1.478	---	---	.312	1.000	5.375	1.875	5.875
	1.000	3/4-16 x 1.125	1-14 x 1.125	7/8-14 x 1.125	7/8-14 x 1.875	1.499	---	.500	.735	.500	1.938	2.281	.106	---	.875	2.500	3/8	-6	.375	1.500	1.000	.406	.562	---	.375	.750	3.625	.500	2.375	2.335	1.966	---	---	.375	1.000	5.375	1.875	5.875
3.250	.625	7/16-20 x .750	5/8-18 x .750	1/2-20 x .750	1/2-20 x 1.125	1.124	---	.375	.735	.500	1.938	2.281	.106	---	.500	2.000	3/8	-6	.375	1.500	1.000	.344	.500	---	.312	.750	3.625	.500	1.750	2.335	1.478	---	---	.312	1.000	5.375	1.875	5.875
	1.000	3/4-16 x 1.125	1-14 x 1.125	7/8-14 x 1.125	7/8-14 x 1.875	1.499	---	.500	.735	.500	1.938	2.281	.106	---	.875	2.500	3/8	-6	.375	1.500	1.000	.406	.562	---	.375	.750	3.625	.500	2.375	2.335	1.966	---	---	.375	1.000	5.375	1.875	5.875
4.000	.625	7/16-20 x .750	5/8-18 x .750	1/2-20 x .750	1/2-20 x 1.125	1.124	---	.375	.735	.500	1.938	2.281	.106	---	.500	2.000	3/8	-6	.375	1.500	1.000	.344	.500	---	.312	.750	3.625	.500	1.750	2.335	1.478	---	---	.312	1.000	5.375	1.875	5.875
	1.000	3/4-16 x 1.125	1-14 x 1.125	7/8-14 x 1.125	7/8-14 x 1.875	1.499	---	.500	.735	.500	1.938	2.281	.106	---	.875	2.500	3/8	-6	.375	1.500	1.000	.406	.562	---	.375	.750	3.625	.500	2.375	2.335	1.966	---	---	.375	1.000	5.375	1.875	5.875
5.000	.625	7/16-20 x .750	5/8-18 x .750	1/2-20 x .750	1/2-20 x 1.125	1.124	---	.375	.735	.500	1.938	2.281	.106	---	.500	2.000	3/8	-6	.375	1.500	1.000	.344	.500	---	.312	.750	3.625	.500	1.750	2.335	1.478	---	---	.312	1.000	5.375	1.875	5.875
	1.000	3/4-16 x 1.125	1-14 x 1.125	7/8-14 x 1.125	7/8-14 x 1.875	1.499	---	.500	.735	.500	1.938	2.281	.106	---	.875	2.500	3/8	-6	.375	1.500	1.000	.406	.562	---	.375	.750	3.625	.500	2.375	2.335	1.966	---	---	.375	1.000	5.375	1.875	5.875
6.000	.625	7/16-20 x .750	5/8-18 x .750	1/2-20 x .750	1/2-20 x 1.125	1.124	---	.375	.735	.500	1.938	2.281	.106	---	.500	2.000	3/8	-6	.375	1.500	1.000	.344	.500	---	.312	.750	3.625	.500	1.750	2.335	1.478	---	---	.312	1.000	5.375	1.875	5.875
	1.000	3/4-16 x 1.125	1-14 x 1.125	7/8-14 x 1.125	7/8-14 x 1.875	1.499	---	.500	.735	.500	1.938	2.281	.106	---	.875	2.500	3/8	-6	.375	1.500	1.000	.406	.562	---	.375	.750	3.625	.500	2.375	2.335	1.966	---	---	.375	1.000	5.375	1.875	5.875

FILE: 4.25_LH25S2.dwg REV: 02/09/2010