

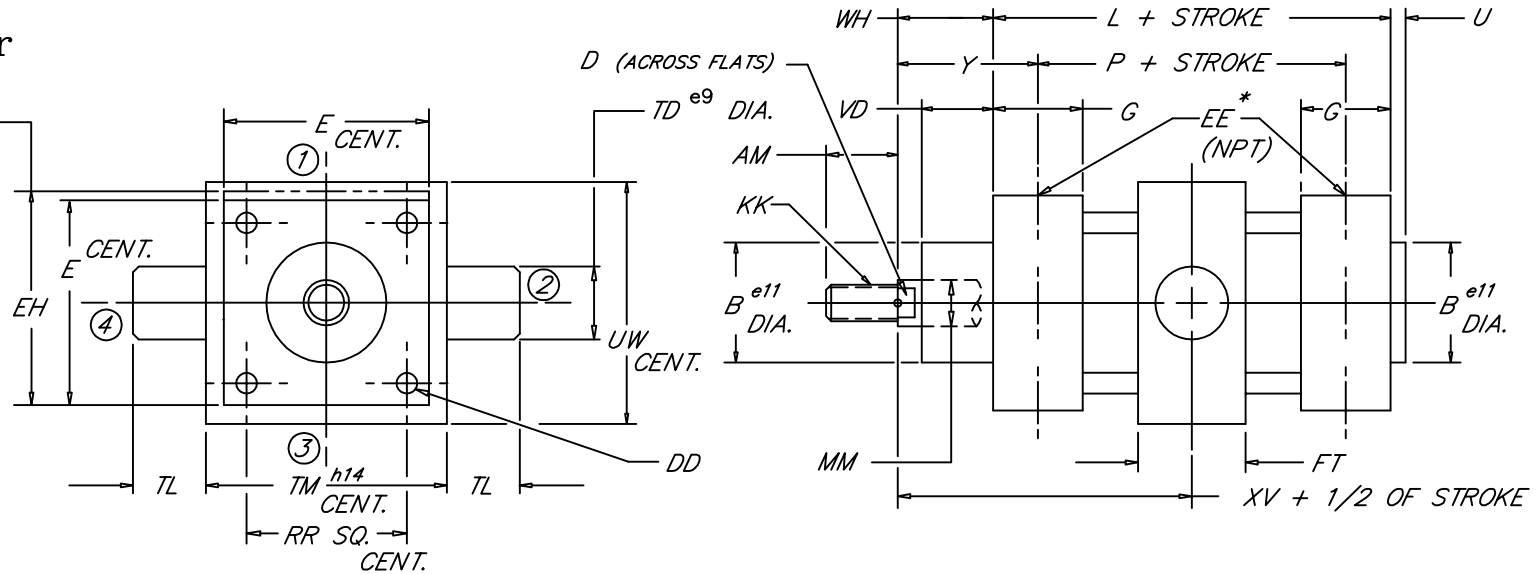
# CENTER TRUNNION PENINSULAR® CYLINDER COMPANY

ISO Mounting Style ILM 6

Metric, Medium Duty  
Aluminum Air Cylinder

NOTE:  
For bore sizes up to 1000 mm call Peninsular.  
For additional rod sizes available call Peninsular.  
For optional rod threads call Peninsular.  
\* For in port mounted proximity switches, ports and cushions refer to the ordering guide.  
U.S. patent numbers: 4,726,282 and D295,753.

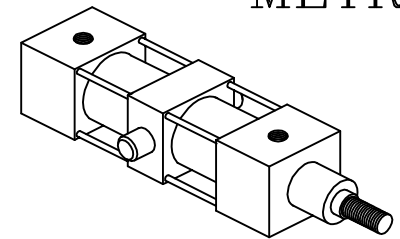
Use EH only for optional prox. switch boss if required.



6.06

	BORE			ROD DIA.			STANDARD MALE ROD THREAD			MAX.													
	MM	KK	AM	B	D	DD	E	EE	EH	FT	G	L	P	RR	TD	TL	TM	U	UW	VD	WH	XV	Y
32	12	M10 X 1.25	22	30	10	M6	50	1/8	62.7	25	35	94	68	32.5	12	12	50	4	65	20	26	73.0	39
40	16	M12 X 1.25	24	35	13	M6	58	1/4	62.7	28	39	105	77	38	16	16	63	4	75	22	30	82.5	44
50	20	M16 X 1.5	32	40	16	M8	70	1/4	72.1	28	39	106	78	46.5	16	16	75	4	95	29	37	90.0	51
63	20	M16 X 1.5	32	45	16	M8	85	3/8	80.3	36	46	121	89	56.5	20	20	90	4	105	29	37	97.5	53
80	25	M20 X 1.5	40	45	21	M10	105	3/8	94.5	36	48	128	96	72	20	20	110	4	130	35	46	110.0	62
100	32	M20 X 1.5	40	55	21	M10	130	1/2	114.6	48	51	138	102	89	25	25	132	4	145	38	51	120.0	69
125	32	M27 X 2.0	54	60	27	M12	157	1/2	141.5	50	62	160	124	110	25	25	160	6	175	50	65	145.0	83
160	40	M36 X 2.0	72	65	36	M16	195	3/4	165.1	50	70	180	130	140	32	32	200	6	220	60	80	170.0	105
200	40	M36 X 2.0	72	75	36	M16	238	3/4	238	50	70	180	130	175	32	32	250	6	260	70	95	185.0	120
250	50	M42 X 2.0	84	90	46	M20	290	1	290	60	70	200	138	220	40	40	320	10	320	80	105	205.0	136
320	50	M48 X 2.0	96	110	46	M24	353	1	353	70	75	220	158	270	50	50	400	10	400	90	120	230.0	151

METRIC



VDMA 24-562  
NAAMS  
DIN ISO 6431  
(MT4)

FILE: 6.06\_ILM06S2.dwg REV: 02/09/2010