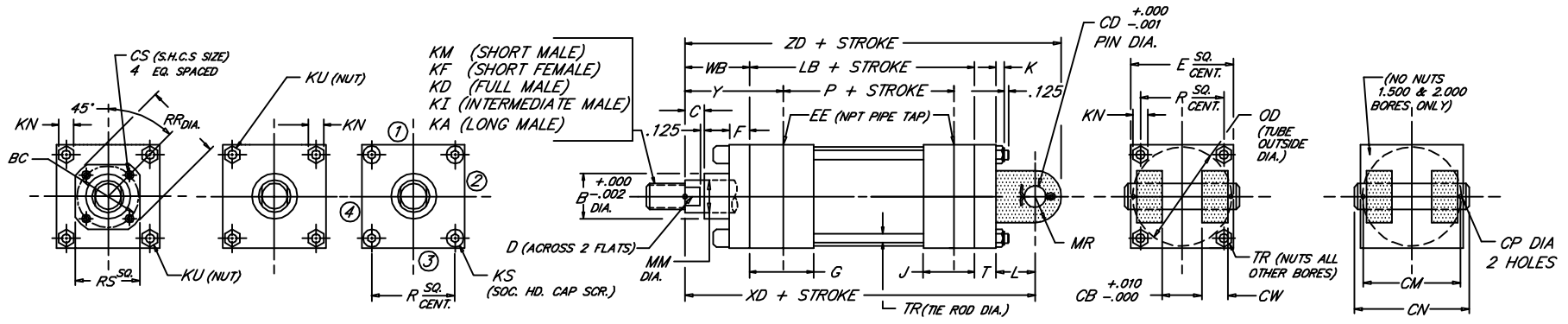
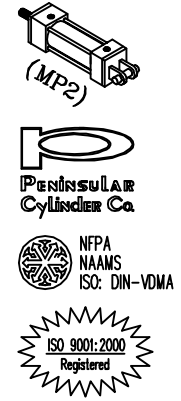


# CAP DETACHABLE CLEVIS

Medium Duty Aluminum Air Cylinder

Peninsular Mounting Style: **LM 24**



2.70

BORE	ROD ROD THREAD X LENGTH					NPT																																	
	MM	KM & KF	KD	KI	KA	B	BC	C	CB	CD	CM	CN	CP	CS	CW	D	E	EE	F	G	J	K	KN	KS	KU	L	LB	MR	OD	P	R	RR	RS	T	TR	WB	XD	Y	ZD
1.500	.625	7/16"-20 x .750	5/8"-18 x .750	1/2"-20 x .750	1/2"-20 x 1.125	1.124	---	.375	.765	.500	1.938	2.281	.106	---	.500	.500	2.000	3/8	.375	1.500	1.000	.312	.438	---	.250	.750	3.625	.625	1.750	2.335	1.428	---	---	.375	.250	1.000	5.750	1.875	6.375
	1.000	3/4"-16 x 1.125	1"-14 x 1.125	7/8"-14 x 1.125	7/8"-14 x 1.875	1.499	---	.500	.765	.500	1.938	2.281	.106	---	.500	.875	2.500	3/8	.375	1.500	1.000	.344	.500	---	.312	.750	3.625	.625	2.250	2.335	1.838	---	---	.375	.312	1.000	5.750	1.875	6.375
2.000	.625	7/16"-20 x .750	5/8"-18 x .750	1/2"-20 x .750	1/2"-20 x 1.125	1.124	---	.375	.765	.500	1.938	2.281	.106	---	.500	.500	2.000	3/8	.375	1.500	1.000	.312	.438	---	.250	.750	3.625	.625	1.750	2.335	1.838	---	---	.375	.312	1.000	5.750	1.875	6.375
	1.000	3/4"-16 x 1.125	1"-14 x 1.125	7/8"-14 x 1.125	7/8"-14 x 1.875	1.499	---	.500	.765	.500	1.938	2.281	.106	---	.500	.875	2.500	3/8	.375	1.500	1.000	.344	.500	---	.312	.750	3.625	.625	2.250	2.335	1.838	---	---	.375	.312	1.000	5.750	1.875	6.375
2.500	.625	7/16"-20 x .750	5/8"-18 x .750	1/2"-20 x .750	1/2"-20 x 1.125	1.124	---	.375	.765	.500	1.938	2.281	.106	---	.500	.500	3.000	3/8	.375	1.500	1.000	.344	.500	.312	---	.750	3.750	.625	2.750	2.460	2.192	---	---	.375	.312	1.000	5.875	1.875	6.500
	1.000	3/4"-16 x 1.125	1"-14 x 1.125	7/8"-14 x 1.125	7/8"-14 x 1.875	1.499	---	.500	.765	.500	1.938	2.281	.106	---	.500	.875	3.000	3/8	.375	1.500	1.000	.344	.500	.312	---	.750	3.750	.625	2.750	2.460	2.192	---	---	.375	.312	1.000	5.875	1.875	6.500
3.250	.625	7/16"-20 x .750	5/8"-18 x .750	1/2"-20 x .750	1/2"-20 x 1.125	1.124	---	.375	.765	.500	1.938	2.281	.106	---	.500	.500	3.000	3/8	.375	1.500	1.000	.344	.500	.312	---	.750	3.750	.625	2.750	2.460	2.192	---	---	.375	.312	1.000	5.875	1.875	6.500
	1.000	3/4"-16 x 1.125	1"-14 x 1.125	7/8"-14 x 1.125	7/8"-14 x 1.875	1.499	---	.500	.765	.500	1.938	2.281	.106	---	.500	.875	3.000	3/8	.375	1.500	1.000	.344	.500	.312	---	.750	3.750	.625	2.750	2.460	2.192	---	---	.375	.312	1.000	5.875	1.875	6.500
4.000	.625	7/16"-20 x .750	5/8"-18 x .750	1/2"-20 x .750	1/2"-20 x 1.125	1.124	2.562	.500	.765	.500	1.938	2.281	.106	---	.500	.500	3.000	3/8	.375	1.500	1.000	.344	.500	.312	---	.750	3.750	.625	2.750	2.460	2.192	---	---	.375	.312	1.000	5.875	1.875	6.500
	1.000	3/4"-16 x 1.125	1"-14 x 1.125	7/8"-14 x 1.125	7/8"-14 x 1.875	1.499	2.562	.500	.765	.500	1.938	2.281	.106	---	.500	.875	3.000	3/8	.375	1.500	1.000	.344	.500	.312	---	.750	3.750	.625	2.750	2.460	2.192	---	---	.375	.312	1.000	5.875	1.875	6.500
5.000	.625	7/16"-20 x .750	5/8"-18 x .750	1/2"-20 x .750	1/2"-20 x 1.125	1.124	2.562	.500	.765	.500	1.938	2.281	.106	---	.500	.500	3.000	3/8	.375	1.500	1.000	.344	.500	.312	---	.750	3.750	.625	2.750	2.460	2.192	---	---	.375	.312	1.000	5.875	1.875	6.500
	1.000	3/4"-16 x 1.125	1"-14 x 1.125	7/8"-14 x 1.125	7/8"-14 x 1.875	1.499	2.562	.500	.765	.500	1.938	2.281	.106	---	.500	.875	3.000	3/8	.375	1.500	1.000	.344	.500	.312	---	.750	3.750	.625	2.750	2.460	2.192	---	---	.375	.312	1.000	5.875	1.875	6.500
6.000	.625	7/16"-20 x .750	5/8"-18 x .750	1/2"-20 x .750	1/2"-20 x 1.125	1.124	2.562	.500	.765	.500	1.938	2.281	.106	---	.500	.500	3.000	3/8	.375	1.500	1.000	.344	.500	.312	---	.750	3.750	.625	2.750	2.460	2.192	---	---	.375	.312	1.000	5.875	1.875	6.500
	1.000	3/4"-16 x 1.125	1"-14 x 1.125	7/8"-14 x 1.125	7/8"-14 x 1.875	1.499	2.562	.500	.765	.500	1.938	2.281	.106	---	.500	.875	3.000	3/8	.375	1.500	1.000	.344	.500	.312	---	.750	3.750	.625	2.750	2.460	2.192	---	---	.375	.312	1.000	5.875	1.875	6.500

FILE: LM24S2.dwg REV: 09-25-06