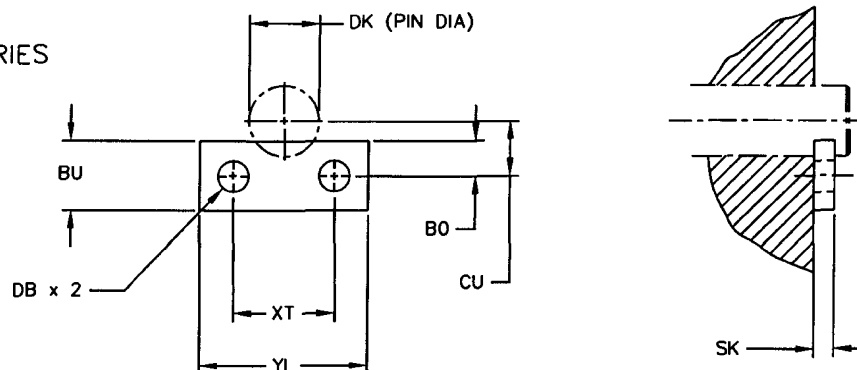


LOCKING PLATE FOR PIVOT PIN

PENINSULAR[®] CYLINDER COMPANY

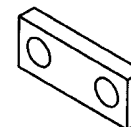
METRIC HIGH PRESSURE HYDRAULIC CYLINDER ACCESSORIES
 SMALL BORE SERIES – ISO 6020-2
 WORKING PRESSURE – 160 BAR (2320 PSI)
 RATED PRESSURE – 250 BAR (3625 PSI)



LOCKING PLATE (-67) SUPPLIED WITH (2) RETAINING SCREWS

DIMENSIONS IN MILLIMETERS

ORDER NUMBER	TYPICAL BORE DIAMETER	TYPICAL PIN DIAMETER	NOMINAL FORCE (N)	BO	BU	CU JS13	DB H13	DK	SK	YL	XT JS13	SCREW (CLASS 8.8) 2 REQ'D	WEIGHT (KG)
IHP25-67	25	12.0	8 000	7.5	15.0	9.5	6.4	12.0	3.0	27.0	16.0	M6 x 12	0.015
IHP32-67	32	16.0	12 500	7.5	15.0	11.5	6.4	16.0	3.0	40.0	25.0	M6 x 12	0.020
IHP40-67	40	20.0	20 000	9.0	18.0	14.5	6.4	20.0	4.0	40.0	25.0	M6 x 15	0.032
IHP50-67	50	25.0	32 000	9.0	18.0	16.5	6.4	25.0	4.0	40.0	25.0	M6 x 15	0.032
IHP63-67	63	30.0	50 000	10.0	20.0	19.0	6.4	30.0	5.0	45.0	30.0	M6 x 15	0.050
IHP80-67	80	40.0	80 000	10.0	20.0	23.0	8.4	40.0	6.0	62.0	42.0	M8 x 20	0.078
IHP100-67	100	50.0	125 000	12.5	25.0	29.5	8.4	50.0	8.0	65.0	45.0	M8 x 20	0.090
IHP125-67	125	60.0	200 000	12.5	25.0	33.5	10.5	60.0	8.0	80.0	55.0	M10 x 25	0.170
IHP160-67	160	80.0	320 000	15.0	30.0	44.0	10.5	80.0	10.0	90.0	60.0	M10 x 25	0.250
IHP200-67	200	100.0	500 000	20.0	40.0	56.0	10.5	100.0	12.0	120.0	90.0	M10 x 25	0.490



ACCESSORY MOUNTING DIMENSIONS CONFORM TO ISO 8133

ACCESSORIES ARE DESIGNED FOR, BUT NOT LIMITED TO, ISO 6020-2 HYDRAULIC CYLINDERS

27650 Groesbeck Highway Roseville Michigan 48066-2759 Telephone: 586-775-7211 Fax: 586-775-4545
 Toll Free: 800-526-7968 Internet: <http://www.peninsularcylinders.com> Email: sales@peninsularcylinders.com

10.15

REV. 02/09/2010