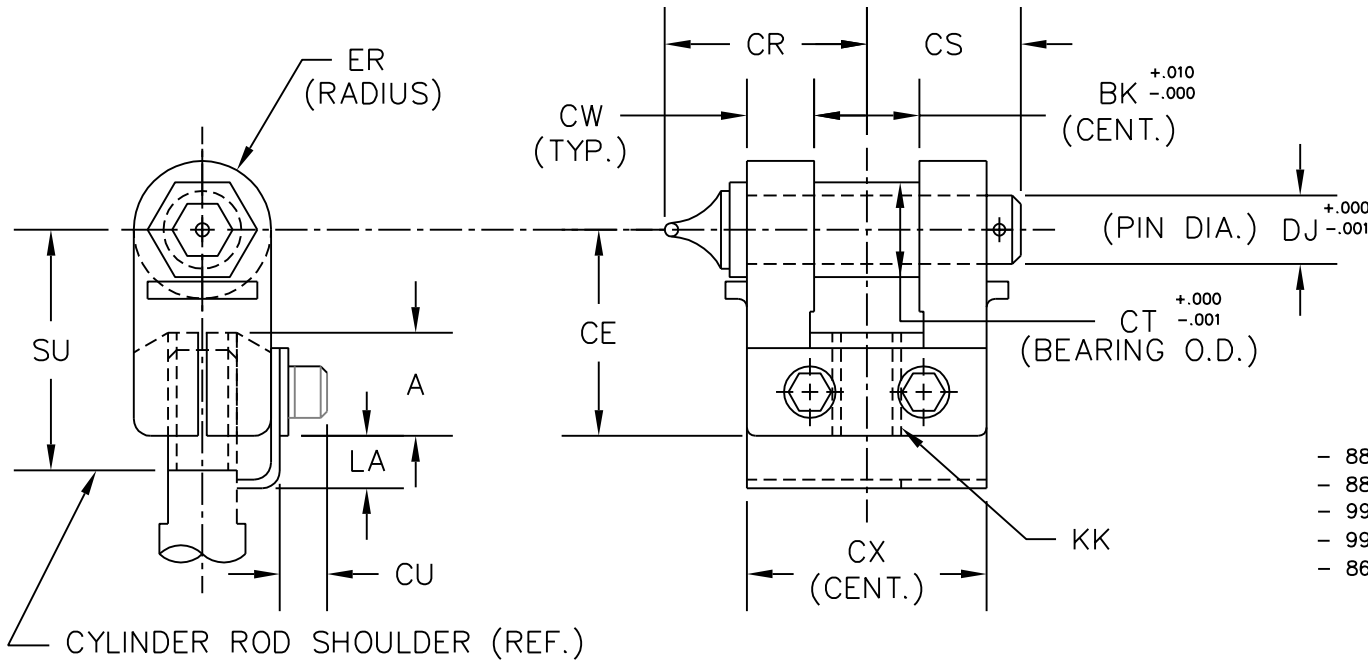


CUSTOM ROD END CLEVIS ASSEMBLY

(NFPA INTERCHANGEABLE)



NOTE:

For quality assurance a Rod End Clevis Assembly with a Pin Bushing is recommended. The Pin Bushing O.D. is NOT NFPA interchangeable. EXAMPLE: C1150-88.

- Sizes: C1150
C1200
C1400
C1600
C1800



- 88 Non-Rotate Grease Zerk Pin with Pin bushing
- 88A Straight Pin - No Pin Bushing
- 99 Non-Rotate Grease Zerk Pin - No Pin Bushing
- 99A Straight Pin with Pin Bushing
- 86 Straight Pin - No Pin Bushing - No Adjusting Bracket.

CYL. BORE	ORDER NUMBER	KK	A	BK	CE	CR	CS	CT	CU	CW	CX	DJ	ER	LA	SU
1.50	C1150-88	1/2"-20	.75	.765	1.50	1.47	1.12	.6905	.57	.49	1.75	.500	.50	.31	1.75
1.50	C1150-88P	5/8"-18	.75	.765	1.50	1.47	1.12	.6905	.57	.49	1.75	.500	.50	.31	1.75
1.50	C1150-88G	7/16"-20	.75	.765	1.50	1.47	1.12	.6905	.57	.49	1.75	.500	.50	.31	1.75
2.00 2.50 3.25	C1200-88	3/4"-16	1.12	1.265	2.38	1.91	1.49	.9415	.75	.62	2.06	.75	.75	.40	2.63
4.00 5.00	C1400-88	1"-14	1.62	1.515	3.12	2.16	1.74	1.1915	.75	.74	2.50	1.00	1.00	.44	3.38
6.00	C1600-88	1 1/4"-12	2.00	2.015	4.12	2.76	2.24	1.5665	.64	.99	3.00	1.375	1.375	.74	4.38
8.00 10.00	C1800-88	1 1/2"-12	2.25	2.515	4.50	3.26	2.74	1.9415	.64	1.24	4.00	1.75	1.75	.74	4.75

PENINSULAR® CYLINDER COMPANY

27650 Groesbeck Highway Roseville Michigan 48066-2759 Telephone: 586-775-7211 Fax: 586-775-4545
 Toll Free: 800-526-7968 Internet: <http://www.peninsularcylinders.com> Email: sales@peninsularcylinders.com
 REV. 14 JAN 2003

