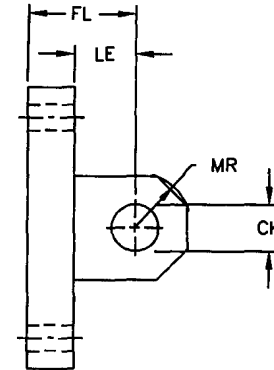
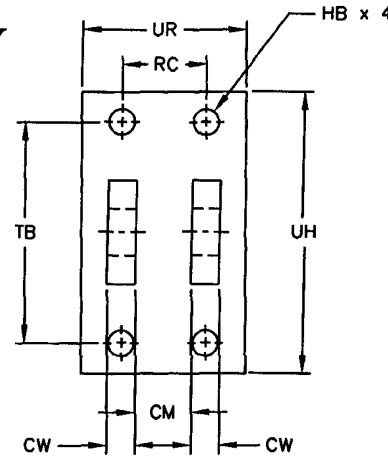


# CLEVIS BRACKET

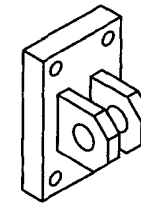
## PENINSULAR® CYLINDER COMPANY

METRIC HIGH PRESSURE HYDRAULIC CYLINDER ACCESSORIES  
 SMALL BORE SERIES - ISO 6020-2  
 WORKING PRESSURE - 160 BAR (2320 PSI)  
 RATED PRESSURE - 250 BAR (3625 PSI)



DIMENSIONS IN MILLIMETERS

ORDER NUMBER	TYPICAL BORE DIAMETER	TYPICAL PIN DIAMETER	NOMINAL FORCE (N)	CK H9	CM A16	CW	FL JS14	HB H13	LE (MIN)	MR (MAX)	RC JS14	TB JS14	UH	UR	WEIGHT (KG)
IHP25-78	25	10.0	8 000	10.0	12.0	6.0	23.0	5.5	13.0	12.0	18.0	47.0	60.0	35.0	0.4
IHP32-78	32	12.0	12 500	12.0	16.0	8.0	29.0	6.6	19.0	17.0	24.0	57.0	70.0	45.0	0.8
IHP40-78	40	14.0	20 000	14.0	20.0	10.0	29.0	9.0	19.0	17.0	30.0	68.0	85.0	55.0	1.0
IHP50-78	50	20.0	32 000	20.0	30.0	15.0	48.0	13.5	32.0	29.0	45.0	102.0	125.0	80.0	2.5
IHP63-78	63	20.0	50 000	20.0	30.0	15.0	48.0	13.5	32.0	29.0	45.0	102.0	125.0	80.0	2.5
IHP80-78	80	28.0	80 000	28.0	40.0	20.0	59.0	17.5	39.0	34.0	60.0	135.0	170.0	100.0	5.0
IHP100-78	100	36.0	125 000	36.0	50.0	25.0	79.0	17.5	54.0	50.0	75.0	167.0	200.0	130.0	9.0
IHP125-78	125	45.0	200 000	45.0	60.0	30.0	87.0	24.0	57.0	53.0	90.0	203.0	250.0	150.0	20.0
IHP160-78	160	56.0	320 000	56.0	70.0	35.0	103.0	30.0	63.0	59.0	105.0	242.0	300.0	180.0	31.0
IHP200-78	200	70.0	500 000	70.0	80.0	40.0	132.0	33.0	82.0	78.0	120.0	300.0	360.0	200.0	41.0



ACCESSORY MOUNTING DIMENSIONS CONFORM TO ISO 8133

ACCESSORIES ARE DESIGNED FOR, BUT NOT LIMITED TO, ISO 6020-2 HYDRAULIC CYLINDERS

27650 Groesbeck Highway Roseville Michigan 48066-2759 Telephone: 586-775-7211 Fax: 586-775-4545  
 Toll Free: 800-526-7968 Internet: <http://www.peninsularcylinders.com> Email: [sales@peninsularcylinders.com](mailto:sales@peninsularcylinders.com)

10.12

REV. 02/09/2010