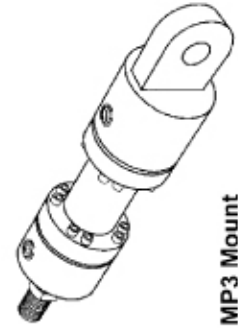
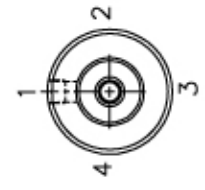
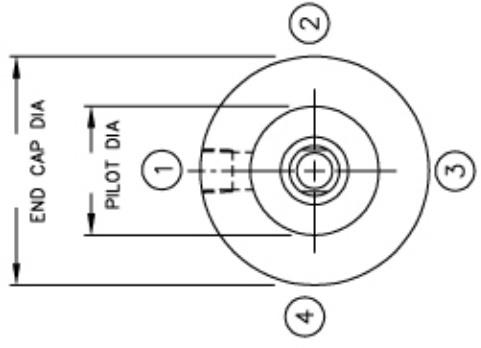
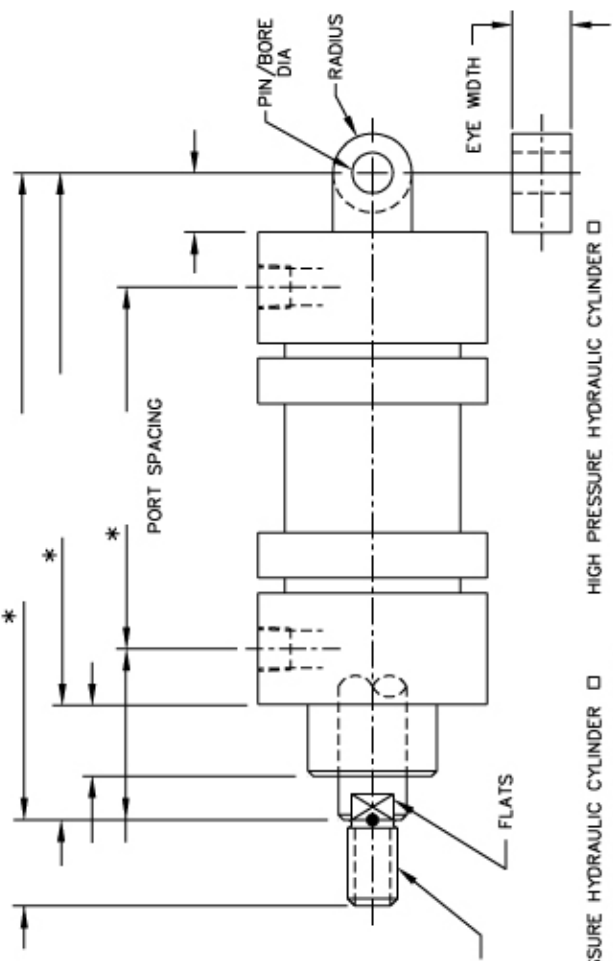


# PENINSULAR MILL CYLINDER SIZING CHART

## CAP FIXED EYE (MP3)



**MP3 Mount  
Cap Fixed Eye**



INCH CYLINDER     METRIC CYLINDER     AIR CYLINDER     LOW PRESSURE HYDRAULIC CYLINDER     HIGH PRESSURE HYDRAULIC CYLINDER     SAFETY FACTOR REQUIRED: \_\_\_\_\_  
 IF HYDRAULIC BOX IS CHECKED, INDICATE WORKING PRESSURE: \_\_\_\_\_ INDICATE MAXIMUM RATED PRESSURE: \_\_\_\_\_  
 BORE DIAMETER: \_\_\_\_\_ STROKE LENGTH: \_\_\_\_\_ PISTON ROD DIAMETER: \_\_\_\_\_  
 PISTON ROD END THREAD: MALE  FEMALE  OTHER  / SPECIFY THREAD DIA, PITCH & LENGTH (I.E., 3/4"-16 x 1.125) \_\_\_\_\_  
 SLEEVE (TUBE) MATERIAL: STEEL  OTHER  / SPECIFY MATERIAL: \_\_\_\_\_  
 CYLINDER HEAD MATERIAL: STEEL  OTHER  / SPECIFY MATERIAL: \_\_\_\_\_  
 CUSHIONS: YES  NO  IF YES: / SPECIFY ROD END ONLY  CAP END ONLY  CUSHION AT BOTH ENDS   
 ROD END CUSHION ADJUSTMENT LOCATION (1,2,3 OR 4): \_\_\_\_\_ CAP END CUSHION ADJUSTMENT LOCATION (1,2,3 OR 4): \_\_\_\_\_  
 INDICATE TYPE OF PORT: NPTF  SAE O-RING  4-BOLT FLANGE  METRIC  OTHER (SPECIFY) \_\_\_\_\_  
 INDICATE PORT SIZE: BOTH ENDS \_\_\_\_\_ ROD END \_\_\_\_\_ CAP END \_\_\_\_\_  
 INDICATE LOCATION OF CYLINDER PORTS: \_\_\_\_\_ CAP END (1,2,3 OR 4) \_\_\_\_\_  
 SUPPLY EXISTING CYLINDER MANUFACTURER & MODEL NUMBER INFORMATION IF KNOWN: \_\_\_\_\_  
 SUPPLY ALL PERTINENT INFORMATION ON EXISTING CYLINDER TAG: \_\_\_\_\_  
 OPERATING FLUID: \_\_\_\_\_ OPERATING TEMPERATURE: \_\_\_\_\_ OPERATING ENVIRONMENT: \_\_\_\_\_  
 SPECIAL OR OPTIONAL FEATURES REQUIRED: \_\_\_\_\_  
 - FEATURE LOCATION KEY -  
 (VIEWED FACING ROD END.)

IF NECESSARY, ATTACH DRAWINGS, SKETCHES OR PHOTOGRAPHS TO PROVIDE ADDITIONAL DETAIL REGARDING YOUR CYLINDER AND/OR APPLICATION  
 ANY QUESTIONS? CALL PENINSULAR AT 1-800-526-7968 OR (586) 775-7211    \* - ADD STROKE TO THESE DIMENSIONS.

27650 Groesbeck Highway Roseville Michigan 48066-2759 Telephone: 586-775-7211 Fax: 586-775-4545 MEMBER NFPA  
 Toll Free: 1-800-526-7968 Internet: www.peninsularcylinders.com Email: sales@peninsularcylinders.com  
 REL. 10-14-02