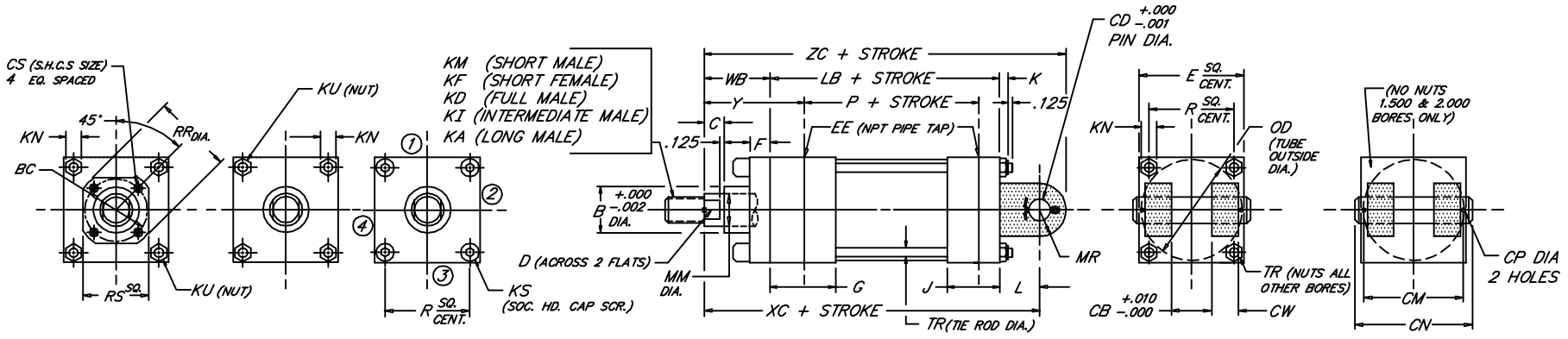
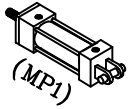


CAP FIXED CLEVIS

Heavy Duty Steel Air Cylinder

Peninsular Mounting Style: **MH 3**



112

| ROD BORE | ROD THREAD X LENGTH | | | | | | | | | | NPT | | | | | | | | | | | | | | | | | | | | | | | | | | | |
|----------|---------------------|-------------------|-------------------|-------------------|-------------------|-------|-------|-------|-------|-------|-------|-------|------|-----|------|-------|-------|-----|------|-------|-------|------|------|------|------|-------|-------|-------|-------|-------|-------|-------|-------|------|-------|-------|-------|-------|
| | MM | KM & KF | KD | KI | KA | B | BC | C | CB | CD | CM | CN | CP | CS | CW | D | E | EE | F | G | J | K | KN | KS | KU | L | LB | MR | OD | P | R | RR | RS | TR | WB | XC | Y | ZC |
| 1.500 | .625 | 7/16"-20 x .750 | 5/8"-18 x .750 | 1/2"-20 x .750 | 1/2"-20 x 1.125 | 1.124 | --- | .375 | .765 | .500 | 1.938 | 2.281 | .106 | --- | .500 | .500 | 2.000 | 3/8 | .375 | 1.500 | 1.000 | .312 | .438 | --- | .250 | .750 | 3.625 | .500 | 1.750 | 2.335 | 1.428 | --- | --- | .250 | 1.000 | 5.375 | 1.875 | 5.875 |
| | 1.000 | 3/4"-16 x 1.125 | 1"-14 x 1.125 | 7/8"-14 x 1.125 | 7/8"-14 x 1.875 | 1.499 | --- | .500 | .765 | .500 | 1.938 | 2.281 | .106 | --- | .500 | .875 | 2.500 | 3/8 | .375 | 1.500 | 1.000 | .344 | .500 | --- | .312 | .750 | 3.625 | .500 | 2.250 | 2.335 | 1.838 | --- | --- | .312 | 1.000 | 5.375 | 1.875 | 6.250 |
| 2.000 | .625 | 7/16"-20 x .750 | 5/8"-18 x .750 | 1/2"-20 x .750 | 1/2"-20 x 1.125 | 1.124 | --- | .375 | .765 | .500 | 1.938 | 2.281 | .106 | --- | .500 | .500 | 2.000 | 3/8 | .375 | 1.500 | 1.000 | .312 | .438 | --- | .250 | .750 | 3.625 | .500 | 1.750 | 2.335 | 1.428 | --- | --- | .250 | 1.000 | 5.375 | 1.875 | 5.875 |
| | 1.375 | 1"-14 x 1.625 | 3/8"-12 x 1.625 | 1 1/4"-12 x 1.625 | 1 1/4"-12 x 2.500 | 1.999 | --- | .625 | .765 | .500 | 1.938 | 2.281 | .106 | --- | .500 | .875 | 2.500 | 3/8 | .375 | 1.500 | 1.000 | .344 | .500 | --- | .312 | .750 | 3.625 | .500 | 2.250 | 2.335 | 1.838 | --- | --- | .312 | 1.000 | 5.500 | 1.875 | 6.000 |
| 2.500 | .625 | 7/16"-20 x .750 | 5/8"-18 x .750 | 1/2"-20 x .750 | 1/2"-20 x 1.125 | 1.124 | --- | .375 | .765 | .500 | 1.938 | 2.281 | .106 | --- | .500 | .500 | 2.000 | 3/8 | .375 | 1.500 | 1.000 | .312 | .438 | --- | .250 | .750 | 3.750 | .500 | 2.750 | 2.460 | 2.192 | --- | --- | .312 | 1.000 | 5.500 | 1.875 | 6.000 |
| | 1.750 | 1 1/4"-12 x 2.000 | 3/4"-12 x 2.000 | 1 1/2"-12 x 2.000 | 1 1/2"-12 x 3.000 | 2.374 | --- | .625 | .765 | .500 | 1.938 | 2.281 | .106 | --- | .500 | .875 | 3.000 | 3/8 | .375 | 1.500 | 1.000 | .344 | .500 | .312 | --- | .750 | 3.750 | .500 | 2.750 | 2.460 | 2.192 | --- | --- | .312 | 1.000 | 5.500 | 1.875 | 6.000 |
| 3.250 | 1.000 | 3/4"-16 x 1.125 | 1"-14 x 1.125 | 7/8"-14 x 1.125 | 7/8"-14 x 1.875 | 1.499 | --- | .500 | 1.265 | .750 | 2.719 | 3.094 | .140 | --- | .625 | .875 | 3.750 | 1/2 | .625 | 1.750 | 1.250 | .438 | .562 | .375 | --- | 1.250 | 4.250 | .750 | 3.500 | 2.750 | 2.758 | --- | --- | .375 | 1.375 | 6.875 | 2.375 | 7.625 |
| | 1.375 | 1"-14 x 1.625 | 3/8"-12 x 1.625 | 1 1/4"-12 x 1.625 | 1 1/4"-12 x 2.500 | 1.999 | --- | .625 | 1.265 | .750 | 2.719 | 3.094 | .140 | --- | .625 | 1.125 | 4.500 | 1/2 | .625 | 1.750 | 1.250 | .438 | .562 | .375 | --- | 1.250 | 4.250 | .750 | 3.500 | 2.750 | 2.758 | --- | --- | .375 | 1.375 | 6.875 | 2.375 | 7.625 |
| 4.000 | 1.750 | 1 1/4"-12 x 2.000 | 3/4"-12 x 2.000 | 1 1/2"-12 x 2.000 | 1 1/2"-12 x 3.000 | 2.374 | 2.562 | .750 | 1.265 | .750 | 2.719 | 3.094 | .140 | --- | .625 | 1.500 | 4.500 | 1/2 | .625 | 1.750 | 1.250 | .438 | .562 | .375 | --- | 1.250 | 4.250 | .750 | 3.500 | 2.750 | 3.323 | 3.734 | 3.000 | .375 | 1.625 | 7.375 | 2.875 | 8.125 |
| | 2.000 | 1 1/2"-12 x 2.250 | 2"-12 x 2.250 | 3/4"-12 x 2.250 | 3/4"-12 x 3.500 | 2.624 | 2.562 | .875 | 1.265 | .750 | 2.719 | 3.094 | .140 | --- | .625 | 1.688 | 4.500 | 1/2 | .625 | 1.750 | 1.250 | .438 | .562 | .375 | --- | 1.250 | 4.250 | .750 | 3.500 | 2.750 | 3.323 | 3.734 | 3.000 | .375 | 2.000 | 7.500 | 3.000 | 8.250 |
| 5.000 | 1.000 | 3/4"-16 x 1.125 | 1"-14 x 1.125 | 7/8"-14 x 1.125 | 7/8"-14 x 1.875 | 1.499 | 2.562 | .500 | 1.265 | .750 | 2.719 | 3.094 | .140 | --- | .625 | .875 | 5.500 | 1/2 | .625 | 1.750 | 1.250 | .594 | .750 | --- | .500 | 1.250 | 4.500 | .750 | 5.250 | 3.000 | 4.101 | 4.312 | 3.750 | .500 | 2.000 | 7.500 | 3.000 | 8.500 |
| | 1.375 | 1"-14 x 1.625 | 3/8"-12 x 1.625 | 1 1/4"-12 x 1.625 | 1 1/4"-12 x 2.500 | 1.999 | 2.562 | .625 | 1.265 | .750 | 2.719 | 3.094 | .140 | --- | .625 | 1.125 | 5.500 | 1/2 | .625 | 1.750 | 1.250 | .594 | .750 | --- | .500 | 1.250 | 4.500 | .750 | 5.250 | 3.000 | 4.101 | 4.312 | 3.750 | .500 | 2.000 | 7.500 | 3.000 | 8.500 |
| 6.000 | 1.750 | 1 1/4"-12 x 2.000 | 3/4"-12 x 2.000 | 1 1/2"-12 x 2.000 | 1 1/2"-12 x 3.000 | 2.374 | 2.562 | .750 | 1.265 | .750 | 2.719 | 3.094 | .140 | --- | .625 | 1.500 | 5.500 | 1/2 | .625 | 1.750 | 1.250 | .594 | .750 | --- | .500 | 1.250 | 4.500 | .750 | 5.250 | 3.000 | 4.101 | 4.312 | 3.750 | .500 | 2.000 | 7.500 | 3.000 | 8.500 |
| | 2.000 | 1 1/2"-12 x 2.250 | 2"-12 x 2.250 | 3/4"-12 x 2.250 | 3/4"-12 x 3.500 | 2.624 | 2.562 | .875 | 1.265 | .750 | 2.719 | 3.094 | .140 | --- | .625 | 1.688 | 5.500 | 1/2 | .625 | 1.750 | 1.250 | .594 | .750 | --- | .500 | 1.250 | 4.500 | .750 | 5.250 | 3.000 | 4.101 | 4.312 | 3.750 | .500 | 2.000 | 7.500 | 3.000 | 8.500 |
| | 2.500 | 1 7/8"-12 x 3.000 | 2 1/2"-12 x 3.000 | 2 1/4"-12 x 3.000 | 2 1/4"-12 x 4.500 | 3.124 | 3.812 | 1.000 | 1.515 | 1.000 | 3.219 | 3.594 | .140 | --- | .625 | 2.062 | 6.500 | 3/4 | .625 | 2.000 | 1.500 | .594 | .750 | --- | .500 | 1.500 | 5.000 | 1.000 | 6.250 | 3.250 | 4.879 | 4.312 | 3.750 | .500 | 2.250 | 8.000 | 3.250 | 9.750 |
| | 3.000 | 2 1/4"-12 x 3.500 | 3"-12 x 3.500 | 2 3/4"-12 x 3.500 | 2 3/4"-12 x 5.500 | 3.749 | 3.812 | 1.000 | 1.515 | 1.000 | 3.219 | 3.594 | .140 | --- | .625 | 2.625 | 6.500 | 3/4 | .625 | 2.000 | 1.500 | .594 | .750 | --- | .500 | 1.500 | 5.000 | 1.000 | 6.250 | 3.250 | 4.879 | 4.312 | 3.750 | .500 | 2.250 | 8.000 | 3.250 | 9.750 |
| | 3.500 | 2 1/2"-12 x 3.500 | 3 1/2"-12 x 3.500 | 3 1/4"-12 x 3.500 | 3 1/4"-12 x 6.500 | 4.249 | 4.700 | 1.000 | 1.515 | 1.000 | 3.219 | 3.594 | .140 | --- | .625 | 3.000 | 6.500 | 3/4 | .625 | 2.000 | 1.500 | .594 | .750 | --- | .500 | 1.500 | 5.000 | 1.000 | 6.250 | 3.250 | 4.879 | 4.312 | 3.750 | .500 | 2.250 | 8.000 | 3.250 | 9.750 |
| | 4.000 | 3"-12 x 4.000 | 4"-12 x 4.000 | 3 3/4"-12 x 4.000 | 3 3/4"-12 x 7.500 | 4.749 | 5.200 | 1.000 | 1.515 | 1.000 | 3.219 | 3.594 | .140 | --- | .625 | 3.375 | 6.500 | 3/4 | .625 | 2.000 | 1.500 | .594 | .750 | --- | .500 | 1.500 | 5.000 | 1.000 | 6.250 | 3.250 | 4.879 | 4.312 | 3.750 | .500 | 2.250 | 8.000 | 3.250 | 9.750 |

FILE: MH3S2.dwg REV: 09-25-06