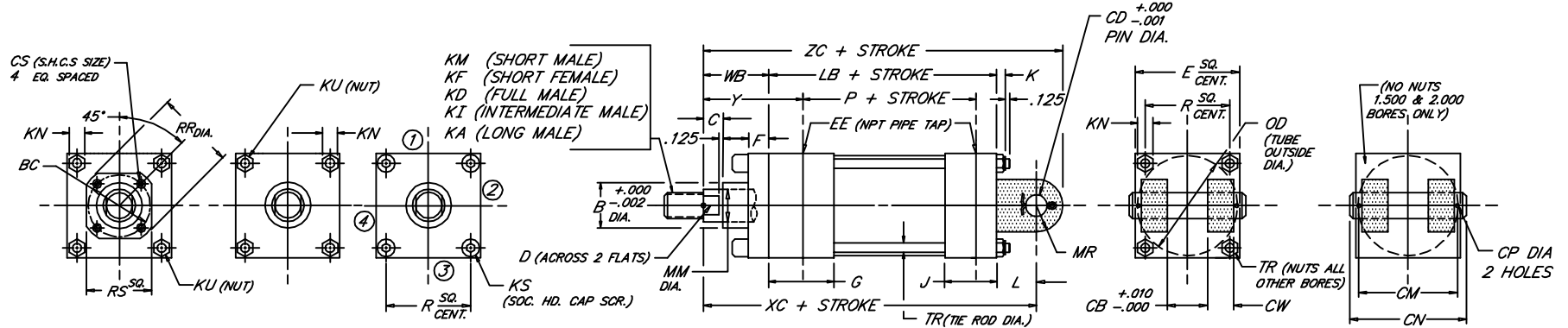
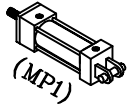


CAP FIXED CLEVIS

Medium Duty Aluminum Air Cylinder

Peninsular Mounting Style: **LM 3**



2.52

BORE	ROD										NPT										TR	WB	XC	Y	ZC																	
	MM	KM & KF		KD		KI		KA		B	BC	C	CB	CD	CM	CN	CP	CS	CW	D						E	EE	F	G	J	K	KN	KS	KU	L	LB	MR	OD	P	R	RR	RS
1.500	.625	7/16	20	5/8	1/2	1/2	1/2	1/2	1.124	---	.375	.765	.500	1.938	2.281	.106	---	.500	.500	2.000	3/8	.375	1.500	1.000	.312	.438	---	.250	.750	3.625	.500	1.750	2.335	1.428	---	---	.250	1.000	5.375	1.875	5.875	6.250
	1.000	3/4	16	1	7/8	1	1	1.124	1.499	---	.375	.765	.500	1.938	2.281	.106	---	.500	.500	2.500	3/8	.375	1.500	1.000	.344	.500	---	.312	.750	3.625	.500	2.250	2.335	1.838	---	---	.312	1.000	5.375	1.875	5.875	6.250
	1.375	1	14	1.625	1	1	1	1.124	1.999	---	.625	.765	.500	1.938	2.281	.106	---	.500	.875	1.125	3.000	3/8	.375	1.500	1.000	.344	.500	.312	.750	3.625	.500	2.250	2.335	1.838	---	---	.312	1.375	5.750	2.250	6.250	6.500
2.000	.625	7/16	20	5/8	1/2	1/2	1/2	1.124	1.499	---	.375	.765	.500	1.938	2.281	.106	---	.500	.500	2.000	3/8	.375	1.500	1.000	.312	.438	---	.250	.750	3.625	.500	1.750	2.335	1.428	---	---	.250	1.000	5.500	1.875	6.000	6.250
	1.000	3/4	16	1	7/8	1	1	1.124	1.499	---	.375	.765	.500	1.938	2.281	.106	---	.500	.500	2.500	3/8	.375	1.500	1.000	.344	.500	---	.312	.750	3.625	.500	2.250	2.335	1.838	---	---	.312	1.375	5.875	2.250	6.375	6.500
	1.375	1	14	1.625	1	1	1	1.124	1.999	---	.625	.765	.500	1.938	2.281	.106	---	.500	.875	1.125	3.000	3/8	.375	1.500	1.000	.344	.500	.312	.750	3.625	.500	2.250	2.335	1.838	---	---	.312	1.625	6.125	2.500	6.625	6.500
2.500	.625	7/16	20	5/8	1/2	1/2	1/2	1.124	1.499	---	.375	.765	.500	1.938	2.281	.106	---	.500	.500	2.000	3/8	.375	1.500	1.000	.312	.438	---	.250	.750	3.625	.500	1.750	2.335	1.428	---	---	.250	1.000	5.500	1.875	6.000	6.250
	1.000	3/4	16	1	7/8	1	1	1.124	1.499	---	.375	.765	.500	1.938	2.281	.106	---	.500	.500	2.500	3/8	.375	1.500	1.000	.344	.500	---	.312	.750	3.625	.500	2.250	2.335	1.838	---	---	.312	1.375	5.875	2.250	6.375	6.500
	1.375	1	14	1.625	1	1	1	1.124	1.999	---	.625	.765	.500	1.938	2.281	.106	---	.500	.875	1.125	3.000	3/8	.375	1.500	1.000	.344	.500	.312	.750	3.625	.500	2.250	2.335	1.838	---	---	.312	1.625	6.125	2.500	6.625	6.500
3.250	.625	7/16	20	5/8	1/2	1/2	1/2	1.124	1.499	---	.375	.765	.500	1.938	2.281	.106	---	.500	.500	2.000	3/8	.375	1.500	1.000	.312	.438	---	.250	.750	3.625	.500	1.750	2.335	1.428	---	---	.250	1.000	5.500	1.875	6.000	6.250
	1.000	3/4	16	1	7/8	1	1	1.124	1.499	---	.375	.765	.500	1.938	2.281	.106	---	.500	.500	2.500	3/8	.375	1.500	1.000	.344	.500	---	.312	.750	3.625	.500	2.250	2.335	1.838	---	---	.312	1.375	5.875	2.250	6.375	6.500
	1.375	1	14	1.625	1	1	1	1.124	1.999	---	.625	.765	.500	1.938	2.281	.106	---	.500	.875	1.125	3.000	3/8	.375	1.500	1.000	.344	.500	.312	.750	3.625	.500	2.250	2.335	1.838	---	---	.312	1.625	6.125	2.500	6.625	6.500
4.000	.625	7/16	20	5/8	1/2	1/2	1/2	1.124	1.499	---	.375	.765	.500	1.938	2.281	.106	---	.500	.500	2.000	3/8	.375	1.500	1.000	.312	.438	---	.250	.750	3.625	.500	1.750	2.335	1.428	---	---	.250	1.000	5.500	1.875	6.000	6.250
	1.000	3/4	16	1	7/8	1	1	1.124	1.499	---	.375	.765	.500	1.938	2.281	.106	---	.500	.500	2.500	3/8	.375	1.500	1.000	.344	.500	---	.312	.750	3.625	.500	2.250	2.335	1.838	---	---	.312	1.375	5.875	2.250	6.375	6.500
	1.375	1	14	1.625	1	1	1	1.124	1.999	---	.625	.765	.500	1.938	2.281	.106	---	.500	.875	1.125	3.000	3/8	.375	1.500	1.000	.344	.500	.312	.750	3.625	.500	2.250	2.335	1.838	---	---	.312	1.625	6.125	2.500	6.625	6.500
5.000	.625	7/16	20	5/8	1/2	1/2	1/2	1.124	1.499	---	.375	.765	.500	1.938	2.281	.106	---	.500	.500	2.000	3/8	.375	1.500	1.000	.312	.438	---	.250	.750	3.625	.500	1.750	2.335	1.428	---	---	.250	1.000	5.500	1.875	6.000	6.250
	1.000	3/4	16	1	7/8	1	1	1.124	1.499	---	.375	.765	.500	1.938	2.281	.106	---	.500	.500	2.500	3/8	.375	1.500	1.000	.344	.500	---	.312	.750	3.625	.500	2.250	2.335	1.838	---	---	.312	1.375	5.875	2.250	6.375	6.500
	1.375	1	14	1.625	1	1	1	1.124	1.999	---	.625	.765	.500	1.938	2.281	.106	---	.500	.875	1.125	3.000	3/8	.375	1.500	1.000	.344	.500	.312	.750	3.625	.500	2.250	2.335	1.838	---	---	.312	1.625	6.125	2.500	6.625	6.500
6.000	.625	7/16	20	5/8	1/2	1/2	1/2	1.124	1.499	---	.375	.765	.500	1.938	2.281	.106	---	.500	.500	2.000	3/8	.375	1.500	1.000	.312	.438	---	.250	.750	3.625	.500	1.750	2.335	1.428	---	---	.250	1.000	5.500	1.875	6.000	6.250
	1.000	3/4	16	1	7/8	1	1	1.124	1.499	---	.375	.765	.500	1.938	2.281	.106	---	.500	.500	2.500	3/8	.375	1.500	1.000	.344	.500	---	.312	.750	3.625	.500	2.250	2.335	1.838	---	---	.312	1.375	5.875	2.250	6.375	6.500
	1.375	1	14	1.625	1	1	1	1.124	1.999	---	.625	.765	.500	1.938	2.281	.106	---	.500	.875	1.125	3.000	3/8	.375	1.500	1.000	.344	.500	.312	.750	3.625	.500	2.250	2.335	1.838	---	---	.312	1.625	6.125	2.500	6.625	6.500

FILE: LM3S2.dwg REV: 09-25-06