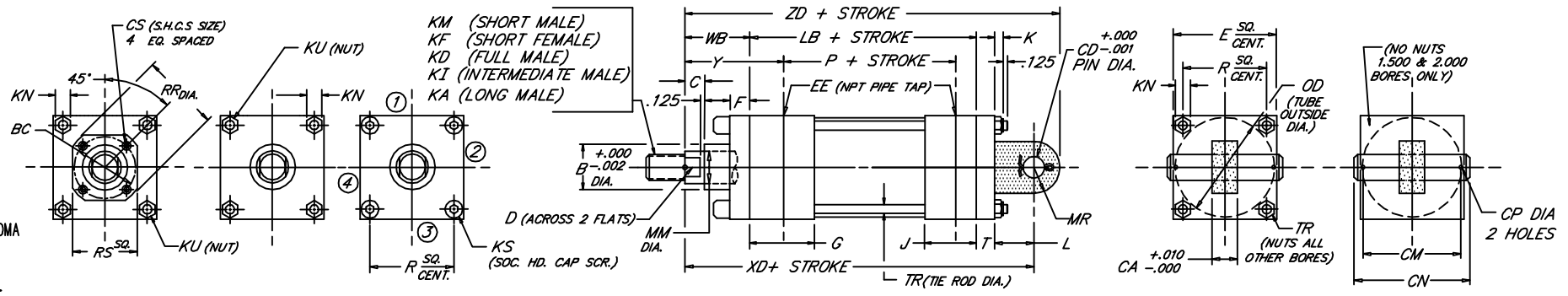
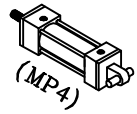


# CAP DETACHABLE EYE

Medium Duty Aluminum Air Cylinder

Peninsular Mounting Style: **LM 21**



2.68

BORE	ROD										NPT										D	E	EE	F	G	J	K	KN	KS	KU	L	LB	MR	OD	P	R	RR	RS	T	TR	WB	XD	Y	ZD
	MM	KM & KF		KD		KI		KA		B	BC	C	CA	CD	CM	CN	CP	CS	D	E																								
1.500	.625	7/16"-20 x .750		5/8"-18 x .750		1/2"-20 x .750		1/2"-20 x 1.125		1.124	---	.375	---	.500	---	.500	---	2.000	3/8	.375	1.500	1.000	.312	.438	---	.250	.750	3.625	.625	1.750	2.335	1.428	---	---	.375	.250	1.000	5.750	1.875	6.375				
	1.000	3/4"-16 x 1.125		1"-14 x 1.125		7/8"-14 x 1.125		7/8"-14 x 1.875		1.499	---	.500	---	.875	---	.735	---	2.500	3/8	.375	1.500	1.000	.344	.500	---	.312	.750	3.625	.625	2.250	2.335	1.838	---	---	.375	.312	1.375	6.125	2.250	6.750				
	1.375	1"-14 x 1.625		1 3/8"-12 x 1.625		1 1/4"-12 x 1.625		1 1/4"-12 x 2.500		1.999	---	.625	---	1.125	---	.735	---	3.000	3/8	.375	1.500	1.000	.344	.500	.312	---	.750	3.750	.625	2.750	2.460	2.192	---	---	.375	.312	1.375	6.250	2.250	6.875				
2.000	.625	7/16"-20 x .750		5/8"-18 x .750		1/2"-20 x .750		1/2"-20 x 1.125		1.124	---	.375	---	.500	---	.500	---	2.000	3/8	.375	1.500	1.000	.312	.438	---	.250	.750	3.625	.625	1.750	2.335	1.428	---	---	.375	.250	1.000	5.875	1.875	6.500				
	1.000	3/4"-16 x 1.125		1"-14 x 1.125		7/8"-14 x 1.125		7/8"-14 x 1.875		1.499	---	.500	---	.875	---	.735	---	2.500	3/8	.375	1.500	1.000	.344	.500	.312	---	.750	3.625	.625	2.250	2.335	1.838	---	---	.375	.312	1.375	6.375	2.250	7.125				
	1.375	1"-14 x 1.625		1 3/8"-12 x 1.625		1 1/4"-12 x 1.625		1 1/4"-12 x 2.500		1.999	---	.625	---	1.125	---	.735	---	3.000	3/8	.375	1.500	1.000	.344	.500	.312	---	.750	3.750	.625	2.750	2.460	2.192	---	---	.375	.312	1.375	6.500	2.500	7.000				
2.500	.625	7/16"-20 x .750		5/8"-18 x .750		1/2"-20 x .750		1/2"-20 x 1.125		1.124	---	.375	---	.500	---	.500	---	2.000	3/8	.375	1.500	1.000	.312	.438	---	.250	.750	3.625	.625	1.750	2.335	1.428	---	---	.375	.250	1.000	5.875	1.875	6.500				
	1.000	3/4"-16 x 1.125		1"-14 x 1.125		7/8"-14 x 1.125		7/8"-14 x 1.875		1.499	---	.500	---	.875	---	.735	---	2.500	3/8	.375	1.500	1.000	.344	.500	.312	---	.750	3.625	.625	2.250	2.335	1.838	---	---	.375	.312	1.375	6.250	2.250	6.875				
	1.375	1"-14 x 1.625		1 3/8"-12 x 1.625		1 1/4"-12 x 1.625		1 1/4"-12 x 2.500		1.999	---	.625	---	1.125	---	.735	---	3.000	3/8	.375	1.500	1.000	.344	.500	.312	---	.750	3.750	.625	2.750	2.460	2.192	---	---	.375	.312	1.375	6.500	2.500	7.125				
3.250	.625	7/16"-20 x .750		5/8"-18 x .750		1/2"-20 x .750		1/2"-20 x 1.125		1.124	---	.375	---	.500	---	.500	---	2.000	3/8	.375	1.500	1.000	.312	.438	---	.250	.750	3.625	.625	1.750	2.335	1.428	---	---	.375	.250	1.000	5.875	1.875	6.500				
	1.000	3/4"-16 x 1.125		1"-14 x 1.125		7/8"-14 x 1.125		7/8"-14 x 1.875		1.499	---	.500	---	.875	---	.735	---	2.500	3/8	.375	1.500	1.000	.344	.500	.312	---	.750	3.625	.625	2.250	2.335	1.838	---	---	.375	.312	1.375	6.375	2.250	6.875				
	1.375	1"-14 x 1.625		1 3/8"-12 x 1.625		1 1/4"-12 x 1.625		1 1/4"-12 x 2.500		1.999	---	.625	---	1.125	---	.735	---	3.000	3/8	.375	1.500	1.000	.344	.500	.312	---	.750	3.750	.625	2.750	2.460	2.192	---	---	.375	.312	1.375	6.500	2.500	7.125				
4.000	.625	7/16"-20 x .750		5/8"-18 x .750		1/2"-20 x .750		1/2"-20 x 1.125		1.124	---	.375	---	.500	---	.500	---	2.000	3/8	.375	1.500	1.000	.312	.438	---	.250	.750	3.625	.625	1.750	2.335	1.428	---	---	.375	.250	1.000	5.875	1.875	6.500				
	1.000	3/4"-16 x 1.125		1"-14 x 1.125		7/8"-14 x 1.125		7/8"-14 x 1.875		1.499	---	.500	---	.875	---	.735	---	2.500	3/8	.375	1.500	1.000	.344	.500	.312	---	.750	3.625	.625	2.250	2.335	1.838	---	---	.375	.312	1.375	6.375	2.250	6.875				
	1.375	1"-14 x 1.625		1 3/8"-12 x 1.625		1 1/4"-12 x 1.625		1 1/4"-12 x 2.500		1.999	---	.625	---	1.125	---	.735	---	3.000	3/8	.375	1.500	1.000	.344	.500	.312	---	.750	3.750	.625	2.750	2.460	2.192	---	---	.375	.312	1.375	6.500	2.500	7.125				
5.000	.625	7/16"-20 x .750		5/8"-18 x .750		1/2"-20 x .750		1/2"-20 x 1.125		1.124	---	.375	---	.500	---	.500	---	2.000	3/8	.375	1.500	1.000	.312	.438	---	.250	.750	3.625	.625	1.750	2.335	1.428	---	---	.375	.250	1.000	5.875	1.875	6.500				
	1.000	3/4"-16 x 1.125		1"-14 x 1.125		7/8"-14 x 1.125		7/8"-14 x 1.875		1.499	---	.500	---	.875	---	.735	---	2.500	3/8	.375	1.500	1.000	.344	.500	.312	---	.750	3.625	.625	2.250	2.335	1.838	---	---	.375	.312	1.375	6.375	2.250	6.875				
	1.375	1"-14 x 1.625		1 3/8"-12 x 1.625		1 1/4"-12 x 1.625		1 1/4"-12 x 2.500		1.999	---	.625	---	1.125	---	.735	---	3.000	3/8	.375	1.500	1.000	.344	.500	.312	---	.750	3.750	.625	2.750	2.460	2.192	---	---	.375	.312	1.375	6.500	2.500	7.125				
6.000	.625	7/16"-20 x .750		5/8"-18 x .750		1/2"-20 x .750		1/2"-20 x 1.125		1.124	---	.375	---	.500	---	.500	---	2.000	3/8	.375	1.500	1.000	.312	.438	---	.250	.750	3.625	.625	1.750	2.335	1.428	---	---	.375	.250	1.000	5.875	1.875	6.500				
	1.000	3/4"-16 x 1.125		1"-14 x 1.125		7/8"-14 x 1.125		7/8"-14 x 1.875		1.499	---	.500	---	.875	---	.735	---	2.500	3/8	.375	1.500	1.000	.344	.500	.312	---	.750	3.625	.625	2.250	2.335	1.838	---	---	.375	.312	1.375	6.375	2.250	6.875				
	1.375	1"-14 x 1.625		1 3/8"-12 x 1.625		1 1/4"-12 x 1.625		1 1/4"-12 x 2.500		1.999	---	.625	---	1.125	---	.735	---	3.000	3/8	.375	1.500	1.000	.344	.500	.312	---	.750	3.750	.625	2.750	2.460	2.192	---	---	.375	.312	1.375	6.500	2.500	7.125				

FILE: LM21S2.dwg REV: 09-25-06