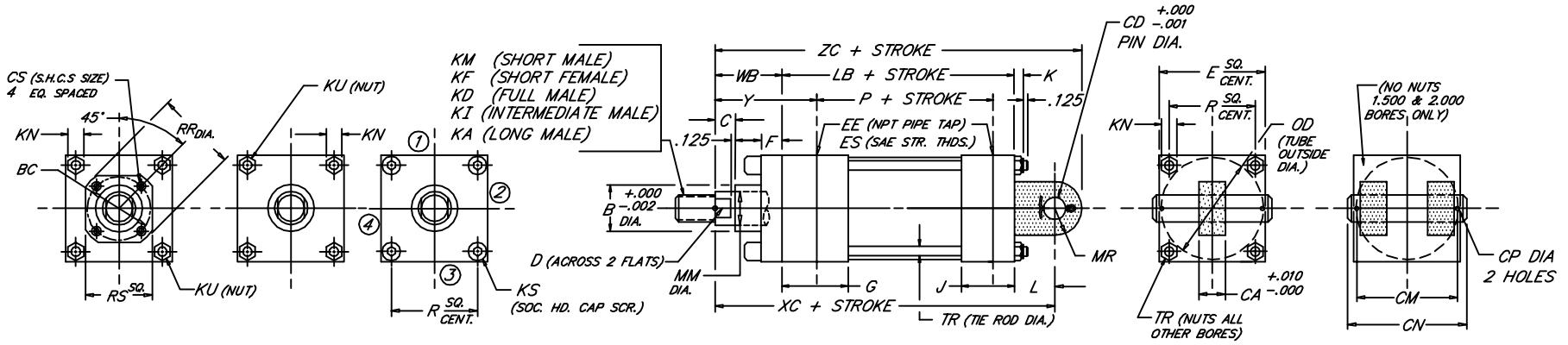
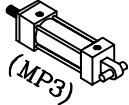


# CAP FIXED EYE

Low Pressure Steel Hydraulic Cylinder

BORE	1.50	2.00	2.50	3.25	4.00	5.00	6.00
WORKING P.S.I.	1500	1500	1000	1000	1000	800	800
RATED P.S.I.	2500	2500	1500	1500	1500	1200	1200

Peninsular Mounting Style: **LH 25**



7.29

BORE	ROD					B	BC	C	CA	CD	CM	CN	CP	CS	D	NPT/SAE										TR	WB	XC	Y	ZC								
	MM	KM & KF		ROD THREAD X LENGTH												EE	ES	F	G	J	K	KN	KS	KU	L						LB	MR	OD	P	R	RR	RS	
1.500	.625	7/16"-20 x .750		5/8"-18 x .750		1.124	---	.375	.735	.500	1.938	2.281	.106	---	.500	2.000	3/8	-6	.375	1.500	1.000	.344	.500	---	.312	.750	3.625	.500	1.750	2.335	1.478	---	---	.312	1.000	5.375	1.875	5.875
	1.000	3/4"-16 x 1.125		1"-14 x 1.125		1.499	---	.500	.735	.500	1.938	2.281	.106	---	.875	2.500	3/8	-6	.375	1.500	1.000	.406	.562	---	.375	.750	3.625	.500	2.375	2.335	1.966	---	---	.375	1.000	5.375	1.875	6.250
2.000	.625	7/16"-20 x .750		5/8"-18 x .750		1.124	---	.375	.735	.500	1.938	2.281	.106	---	.500	2.000	3/8	-6	.375	1.500	1.000	.406	.562	---	.375	.750	3.625	.500	2.375	2.335	1.966	---	---	.375	1.000	5.375	1.875	5.875
	1.000	3/4"-16 x 1.125		1"-14 x 1.125		1.499	---	.500	.735	.500	1.938	2.281	.106	---	.875	2.500	3/8	-6	.375	1.500	1.000	.406	.562	---	.375	.750	3.625	.500	2.375	2.335	1.966	---	---	.375	1.375	5.750	2.250	6.250
2.500	.625	7/16"-20 x .750		5/8"-18 x .750		1.124	---	.375	.735	.500	1.938	2.281	.106	---	.500	3.000	3/8	-6	.375	1.500	1.000	.406	.562	.375	---	.750	3.750	.500	2.875	2.460	2.320	---	---	.375	1.000	5.500	1.875	6.000
	1.000	3/4"-16 x 1.125		1"-14 x 1.125		1.499	---	.500	.735	.500	1.938	2.281	.106	---	.875	3.000	3/8	-6	.375	1.500	1.000	.406	.562	.375	---	.750	3.750	.500	2.875	2.460	2.320	---	---	.375	1.375	5.875	2.250	6.375
3.250	.625	7/16"-20 x .750		5/8"-18 x .750		1.124	---	.375	.735	.500	1.938	2.281	.106	---	.500	3.000	3/8	-6	.375	1.500	1.000	.406	.562	.375	---	.750	3.750	.500	2.875	2.460	2.320	---	---	.375	1.375	5.875	2.250	6.625
	1.000	3/4"-16 x 1.125		1"-14 x 1.125		1.499	---	.500	.735	.500	1.938	2.281	.106	---	.875	3.000	3/8	-6	.375	1.500	1.000	.406	.562	.375	---	.750	3.750	.500	2.875	2.460	2.320	---	---	.375	1.750	6.125	2.500	6.875
4.000	.625	7/16"-20 x .750		5/8"-18 x .750		1.124	---	.375	.735	.500	1.938	2.281	.106	---	.500	3.000	3/8	-6	.375	1.500	1.000	.406	.562	.375	---	.750	3.750	.500	2.875	2.460	2.320	---	---	.375	1.000	5.500	1.875	6.875
	1.000	3/4"-16 x 1.125		1"-14 x 1.125		1.499	---	.500	.735	.500	1.938	2.281	.106	---	.875	3.000	3/8	-6	.375	1.500	1.000	.406	.562	.375	---	.750	3.750	.500	2.875	2.460	2.320	---	---	.375	1.375	5.875	2.250	6.625
5.000	.625	7/16"-20 x .750		5/8"-18 x .750		1.124	---	.375	.735	.500	1.938	2.281	.106	---	.500	3.000	3/8	-6	.375	1.500	1.000	.406	.562	.375	---	.750	3.750	.500	2.875	2.460	2.320	---	---	.375	1.000	5.500	1.875	7.125
	1.000	3/4"-16 x 1.125		1"-14 x 1.125		1.499	---	.500	.735	.500	1.938	2.281	.106	---	.875	3.000	3/8	-6	.375	1.500	1.000	.406	.562	.375	---	.750	3.750	.500	2.875	2.460	2.320	---	---	.375	1.375	5.875	2.250	7.125
6.000	.625	7/16"-20 x .750		5/8"-18 x .750		1.124	---	.375	.735	.500	1.938	2.281	.106	---	.500	3.000	3/8	-6	.375	1.500	1.000	.406	.562	.375	---	.750	3.750	.500	2.875	2.460	2.320	---	---	.375	1.000	5.500	1.875	7.375
	1.000	3/4"-16 x 1.125		1"-14 x 1.125		1.499	---	.500	.735	.500	1.938	2.281	.106	---	.875	3.000	3/8	-6	.375	1.500	1.000	.406	.562	.375	---	.750	3.750	.500	2.875	2.460	2.320	---	---	.375	1.375	5.875	2.250	7.375

FILE: LH25.dwg REV: 09-25-06

27650 Groesbeck Hwy • Roseville, MI 48066-2759 • Phone 586.775.7211 • Fax 586.775.4545 • Toll Free 800.526.7968 • e-mail: sales@peninsularcylinders.com • www.peninsularcylinders.com