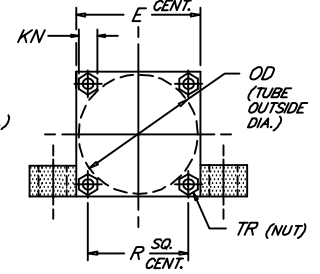
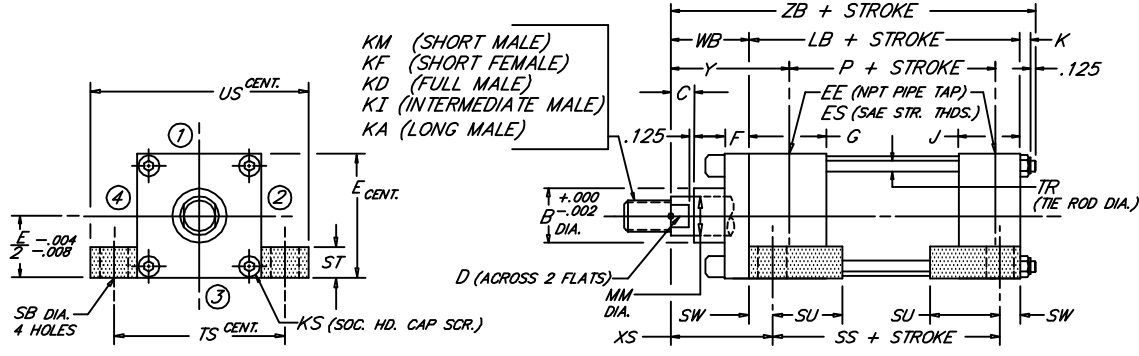
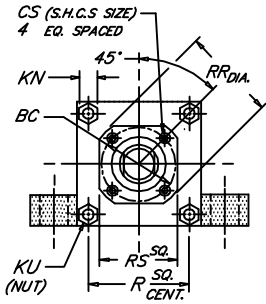
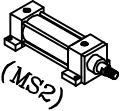


FOOT SIDE LUGS

Low Pressure Steel Hydraulic Cylinder

BORE	1.50	2.00	2.50	3.25	4.00	5.00	6.00
WORKING P.S.I.	1500	1500	1000	1000	1000	800	800
RATED P.S.I.	2500	2500	1500	1500	1500	1200	1200

Peninsular Mounting Style: **LH 1**



- KM (SHORT MALE)
- KF (SHORT FEMALE)
- KD (FULL MALE)
- KI (INTERMEDIATE MALE)
- KA (LONG MALE)

7.10

BORE	ROD					ROD THREAD X LENGTH																			NPT/SAE														
	MM	KM & KF	KD	KI	KA	B	BC	C	CS	D	E	EE	ES	F	G	J	K	KN	KS	KU	LB	OD	P	R	RR	RS	SB	SS	ST	SU	SW	TR	TS	US	WB	XS	Y	ZB	
1.500	.625	7/16"-20 x .750	5/8"-18 x .750	1/2"-20 x .750	1/2"-20 x 1.125	1.124	---	.375	---	.500	2.000	3/8	-6	.375	1.500	1.000	.344	.500	.312	---	3.625	1.750	2.335	1.478	---	---	.438	2.875	.500	.938	.375	.312	2.750	3.500	1.000	1.375	1.875	5.094	
	1.000	3/4"-16 x 1.125	1"-14 x 1.125	7/8"-14 x 1.125	7/8"-14 x 1.875	1.499	---	.500	---	.875	2.500	3/8	-6	.375	1.500	1.000	.406	.562	.375	---	3.625	2.375	2.335	1.966	---	---	.438	2.875	.500	.938	.375	.312	3.250	4.000	1.000	1.375	1.875	5.531	
	1.375	1"-14 x 1.625	3/8"-12 x 1.625	1 1/4"-12 x 1.625	1 1/4"-12 x 2.500	1.999	---	.625	---	1.125	---	---	---	---	---	---	---	---	---	---	---	---	---	---	---	---	---	---	---	---	---	---	---	---	---	---	---	---	---
2.000	.625	7/16"-20 x .750	5/8"-18 x .750	1/2"-20 x .750	1/2"-20 x 1.125	1.124	---	.375	---	.500	2.000	3/8	-6	.375	1.500	1.000	.344	.500	.312	---	3.625	1.750	2.335	1.478	---	---	.438	2.875	.500	.938	.375	.312	2.750	3.500	1.000	1.375	1.875	5.156	
	1.000	3/4"-16 x 1.125	1"-14 x 1.125	7/8"-14 x 1.125	7/8"-14 x 1.875	1.499	---	.500	---	.875	2.500	3/8	-6	.375	1.500	1.000	.406	.562	.375	---	3.625	2.375	2.335	1.966	---	---	.438	2.875	.500	.938	.375	.312	3.250	4.000	1.000	1.375	1.875	5.531	
	1.375	1"-14 x 1.625	3/8"-12 x 1.625	1 1/4"-12 x 1.625	1 1/4"-12 x 2.500	1.999	---	.625	---	1.125	---	---	---	---	---	---	---	---	---	---	---	---	---	---	---	---	---	---	---	---	---	---	---	---	---	---	---	---	---
2.500	.625	7/16"-20 x .750	5/8"-18 x .750	1/2"-20 x .750	1/2"-20 x 1.125	1.124	---	.375	---	.500	2.000	3/8	-6	.375	1.500	1.000	.344	.500	.312	---	3.625	1.750	2.335	1.478	---	---	.438	2.875	.500	.938	.375	.312	2.750	3.500	1.000	1.375	1.875	5.281	
	1.000	3/4"-16 x 1.125	1"-14 x 1.125	7/8"-14 x 1.125	7/8"-14 x 1.875	1.499	---	.500	---	.875	2.500	3/8	-6	.375	1.500	1.000	.406	.562	.375	---	3.625	2.375	2.335	1.966	---	---	.438	2.875	.500	.938	.375	.312	3.250	4.000	1.000	1.375	1.875	5.656	
	1.375	1"-14 x 1.625	3/8"-12 x 1.625	1 1/4"-12 x 1.625	1 1/4"-12 x 2.500	1.999	---	.625	---	1.125	---	---	---	---	---	---	---	---	---	---	---	---	---	---	---	---	---	---	---	---	---	---	---	---	---	---	---	---	---
3.250	.625	7/16"-20 x .750	5/8"-18 x .750	1/2"-20 x .750	1/2"-20 x 1.125	1.124	---	.375	---	.500	2.000	3/8	-6	.375	1.500	1.000	.344	.500	.312	---	3.625	1.750	2.335	1.478	---	---	.438	2.875	.500	.938	.375	.312	2.750	3.500	1.000	1.375	1.875	5.281	
	1.000	3/4"-16 x 1.125	1"-14 x 1.125	7/8"-14 x 1.125	7/8"-14 x 1.875	1.499	---	.500	---	.875	2.500	3/8	-6	.375	1.500	1.000	.406	.562	.375	---	3.625	2.375	2.335	1.966	---	---	.438	2.875	.500	.938	.375	.312	3.250	4.000	1.000	1.375	1.875	5.656	
	1.375	1"-14 x 1.625	3/8"-12 x 1.625	1 1/4"-12 x 1.625	1 1/4"-12 x 2.500	1.999	---	.625	---	1.125	---	---	---	---	---	---	---	---	---	---	---	---	---	---	---	---	---	---	---	---	---	---	---	---	---	---	---	---	---
4.000	.625	7/16"-20 x .750	5/8"-18 x .750	1/2"-20 x .750	1/2"-20 x 1.125	1.124	---	.375	---	.500	2.000	3/8	-6	.375	1.500	1.000	.344	.500	.312	---	3.625	1.750	2.335	1.478	---	---	.438	2.875	.500	.938	.375	.312	2.750	3.500	1.000	1.375	1.875	5.281	
	1.000	3/4"-16 x 1.125	1"-14 x 1.125	7/8"-14 x 1.125	7/8"-14 x 1.875	1.499	---	.500	---	.875	2.500	3/8	-6	.375	1.500	1.000	.406	.562	.375	---	3.625	2.375	2.335	1.966	---	---	.438	2.875	.500	.938	.375	.312	3.250	4.000	1.000	1.375	1.875	5.656	
	1.375	1"-14 x 1.625	3/8"-12 x 1.625	1 1/4"-12 x 1.625	1 1/4"-12 x 2.500	1.999	---	.625	---	1.125	---	---	---	---	---	---	---	---	---	---	---	---	---	---	---	---	---	---	---	---	---	---	---	---	---	---	---	---	---
5.000	.625	7/16"-20 x .750	5/8"-18 x .750	1/2"-20 x .750	1/2"-20 x 1.125	1.124	---	.375	---	.500	2.000	3/8	-6	.375	1.500	1.000	.344	.500	.312	---	3.625	1.750	2.335	1.478	---	---	.438	2.875	.500	.938	.375	.312	2.750	3.500	1.000	1.375	1.875	5.281	
	1.000	3/4"-16 x 1.125	1"-14 x 1.125	7/8"-14 x 1.125	7/8"-14 x 1.875	1.499	---	.500	---	.875	2.500	3/8	-6	.375	1.500	1.000	.406	.562	.375	---	3.625	2.375	2.335	1.966	---	---	.438	2.875	.500	.938	.375	.312	3.250	4.000	1.000	1.375	1.875	5.656	
	1.375	1"-14 x 1.625	3/8"-12 x 1.625	1 1/4"-12 x 1.625	1 1/4"-12 x 2.500	1.999	---	.625	---	1.125	---	---	---	---	---	---	---	---	---	---	---	---	---	---	---	---	---	---	---	---	---	---	---	---	---	---	---	---	---
6.000	.625	7/16"-20 x .750	5/8"-18 x .750	1/2"-20 x .750	1/2"-20 x 1.125	1.124	---	.375	---	.500	2.000	3/8	-6	.375	1.500	1.000	.344	.500	.312	---	3.625	1.750	2.335	1.478	---	---	.438	2.875	.500	.938	.375	.312	2.750	3.500	1.000	1.375	1.875	5.281	
	1.000	3/4"-16 x 1.125	1"-14 x 1.125	7/8"-14 x 1.125	7/8"-14 x 1.875	1.499	---	.500	---	.875	2.500	3/8	-6	.375	1.500	1.000	.406	.562	.375	---	3.625	2.375	2.335	1.966	---	---	.438	2.875	.500	.938	.375	.312	3.250	4.000	1.000	1.375	1.875	5.656	
	1.375	1"-14 x 1.625	3/8"-12 x 1.625	1 1/4"-12 x 1.625	1 1/4"-12 x 2.500	1.999	---	.625	---	1.125	---	---	---	---	---	---	---	---	---	---	---	---	---	---	---	---	---	---	---	---	---	---	---	---	---	---	---	---	---

NEVA DESIGN

FILE: LH1.dwg REV: 09-25-06