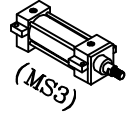


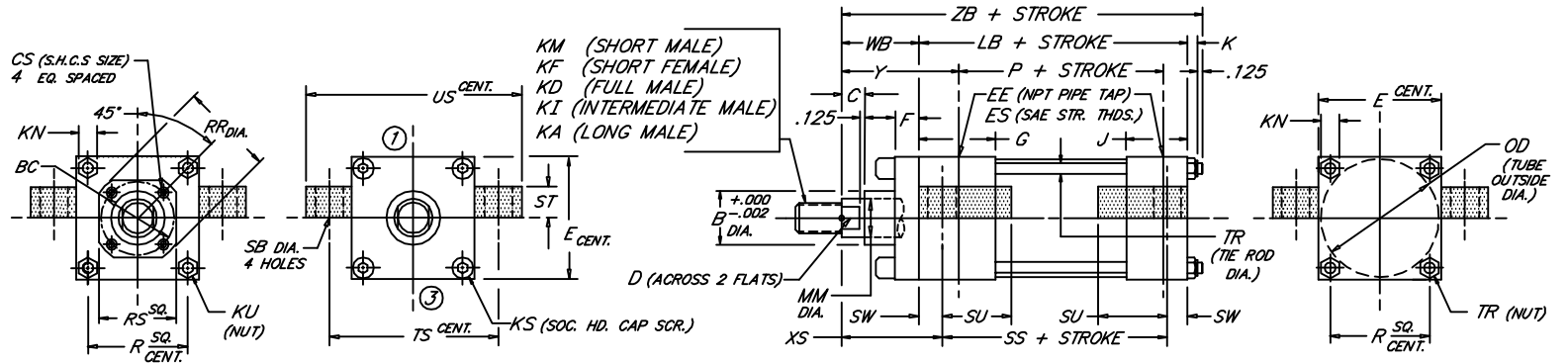
CENTERLINE LUGS

Low Pressure Steel Hydraulic Cylinder

Peninsular Mounting Style: **LH 15**



BORE	WORKING P.S.I.	RATED P.S.I.
1.50	1500	2500
2.00	1500	2500
2.50	1000	1500
3.25	1000	1500
4.00	1000	1500
5.00	800	1200
6.00	800	1200



7.22

BORE	ROD					ROD THREAD X LENGTH																	NPT/SAE															
	MM	KM & KF	KD	KI	KA	B	BC	C	CS	D	E	EE	ES	F	G	J	K	KN	KS	KU	LB	OD	P	R	RR	RS	SB	SS	ST	SU	SW	TR	TS	US	WB	XS	Y	ZB
1.500	.625	7/16"-20 x .750	5/8"-18 x .750	1/2"-20 x .750	1/2"-20 x 1.125	1.124	---	.375	---	.500	2.000	3/8	-6	.375	1.500	1.000	.344	.500	.312	---	3.625	1.750	2.335	1.478	---	---	.438	2.875	.500	.938	.375	.312	2.750	3.500	1.000	1.375	1.875	5.094
	1.000	3/4"-16 x 1.125	1"-14 x 1.125	7/8"-14 x 1.125	7/8"-14 x 1.875	1.499	---	.500	---	.875	2.500	3/8	-6	.375	1.500	1.000	.406	.562	.375	---	3.625	2.375	2.335	1.966	---	---	.438	2.875	.500	.938	.375	.375	3.250	4.000	1.000	1.375	1.875	5.531
	1.375	1"-14 x 1.625	3/8"-12 x 1.625	1 1/4"-12 x 1.625	1 1/4"-12 x 2.500	1.999	---	.625	---	1.125	3.000	3/8	-6	.375	1.500	1.000	.406	.562	.375	---	3.750	2.875	2.460	2.320	---	---	.438	3.000	.500	.938	.375	.375	3.750	4.500	1.000	1.375	1.875	5.281
2.000	.625	7/16"-20 x .750	5/8"-18 x .750	1/2"-20 x .750	1/2"-20 x 1.125	1.124	---	.375	---	.500	2.000	3/8	-6	.375	1.500	1.000	.344	.500	.312	---	3.625	1.750	2.335	1.478	---	---	.438	2.875	.500	.938	.375	.312	2.750	3.500	1.000	1.375	1.875	5.156
	1.000	3/4"-16 x 1.125	1"-14 x 1.125	7/8"-14 x 1.125	7/8"-14 x 1.875	1.499	---	.500	---	.875	2.500	3/8	-6	.375	1.500	1.000	.406	.562	.375	---	3.625	2.375	2.335	1.966	---	---	.438	2.875	.500	.938	.375	.375	3.250	4.000	1.000	1.375	1.875	5.531
	1.375	1"-14 x 1.625	3/8"-12 x 1.625	1 1/4"-12 x 1.625	1 1/4"-12 x 2.500	1.999	---	.625	---	1.125	3.000	3/8	-6	.375	1.500	1.000	.406	.562	.375	---	3.750	2.875	2.460	2.320	---	---	.438	3.000	.500	.938	.375	.375	3.750	4.500	1.000	1.375	1.875	5.656
2.500	.625	7/16"-20 x .750	5/8"-18 x .750	1/2"-20 x .750	1/2"-20 x 1.125	1.124	---	.375	---	.500	2.000	3/8	-6	.375	1.500	1.000	.344	.500	.312	---	3.625	1.750	2.335	1.478	---	---	.438	2.875	.500	.938	.375	.312	2.750	3.500	1.000	1.375	1.875	5.281
	1.000	3/4"-16 x 1.125	1"-14 x 1.125	7/8"-14 x 1.125	7/8"-14 x 1.875	1.499	---	.500	---	.875	2.500	3/8	-6	.375	1.500	1.000	.406	.562	.375	---	3.625	2.375	2.335	1.966	---	---	.438	2.875	.500	.938	.375	.375	3.250	4.000	1.000	1.375	1.875	5.531
	1.375	1"-14 x 1.625	3/8"-12 x 1.625	1 1/4"-12 x 1.625	1 1/4"-12 x 2.500	1.999	---	.625	---	1.125	3.000	3/8	-6	.375	1.500	1.000	.406	.562	.375	---	3.750	2.875	2.460	2.320	---	---	.438	3.000	.500	.938	.375	.375	3.750	4.500	1.000	1.375	1.875	5.906
3.250	.625	7/16"-20 x .750	5/8"-18 x .750	1/2"-20 x .750	1/2"-20 x 1.125	1.124	---	.375	---	.500	2.000	3/8	-6	.375	1.500	1.000	.344	.500	.312	---	3.625	1.750	2.335	1.478	---	---	.438	2.875	.500	.938	.375	.312	2.750	3.500	1.000	1.375	1.875	5.281
	1.000	3/4"-16 x 1.125	1"-14 x 1.125	7/8"-14 x 1.125	7/8"-14 x 1.875	1.499	---	.500	---	.875	2.500	3/8	-6	.375	1.500	1.000	.406	.562	.375	---	3.625	2.375	2.335	1.966	---	---	.438	2.875	.500	.938	.375	.375	3.250	4.000	1.000	1.375	1.875	5.531
	1.375	1"-14 x 1.625	3/8"-12 x 1.625	1 1/4"-12 x 1.625	1 1/4"-12 x 2.500	1.999	---	.625	---	1.125	3.000	3/8	-6	.375	1.500	1.000	.406	.562	.375	---	3.750	2.875	2.460	2.320	---	---	.438	3.000	.500	.938	.375	.375	3.750	4.500	1.000	1.375	1.875	5.656
4.000	.625	7/16"-20 x .750	5/8"-18 x .750	1/2"-20 x .750	1/2"-20 x 1.125	1.124	---	.375	---	.500	2.000	3/8	-6	.375	1.500	1.000	.344	.500	.312	---	3.625	1.750	2.335	1.478	---	---	.438	2.875	.500	.938	.375	.312	2.750	3.500	1.000	1.375	1.875	5.281
	1.000	3/4"-16 x 1.125	1"-14 x 1.125	7/8"-14 x 1.125	7/8"-14 x 1.875	1.499	---	.500	---	.875	2.500	3/8	-6	.375	1.500	1.000	.406	.562	.375	---	3.625	2.375	2.335	1.966	---	---	.438	2.875	.500	.938	.375	.375	3.250	4.000	1.000	1.375	1.875	5.531
	1.375	1"-14 x 1.625	3/8"-12 x 1.625	1 1/4"-12 x 1.625	1 1/4"-12 x 2.500	1.999	---	.625	---	1.125	3.000	3/8	-6	.375	1.500	1.000	.406	.562	.375	---	3.750	2.875	2.460	2.320	---	---	.438	3.000	.500	.938	.375	.375	3.750	4.500	1.000	1.375	1.875	5.906
5.000	.625	7/16"-20 x .750	5/8"-18 x .750	1/2"-20 x .750	1/2"-20 x 1.125	1.124	---	.375	---	.500	2.000	3/8	-6	.375	1.500	1.000	.344	.500	.312	---	3.625	1.750	2.335	1.478	---	---	.438	2.875	.500	.938	.375	.312	2.750	3.500	1.000	1.375	1.875	5.281
	1.000	3/4"-16 x 1.125	1"-14 x 1.125	7/8"-14 x 1.125	7/8"-14 x 1.875	1.499	---	.500	---	.875	2.500	3/8	-6	.375	1.500	1.000	.406	.562	.375	---	3.625	2.375	2.335	1.966	---	---	.438	2.875	.500	.938	.375	.375	3.250	4.000	1.000	1.375	1.875	5.531
	1.375	1"-14 x 1.625	3/8"-12 x 1.625	1 1/4"-12 x 1.625	1 1/4"-12 x 2.500	1.999	---	.625	---	1.125	3.000	3/8	-6	.375	1.500	1.000	.406	.562	.375	---	3.750	2.875	2.460	2.320	---	---	.438	3.000	.500	.938	.375	.375	3.750	4.500	1.000	1.375	1.875	5.656
6.000	.625	7/16"-20 x .750	5/8"-18 x .750	1/2"-20 x .750	1/2"-20 x 1.125	1.124	---	.375	---	.500	2.000	3/8	-6	.375	1.500	1.000	.344	.500	.312	---	3.625	1.750	2.335	1.478	---	---	.438	2.875	.500	.938	.375	.312	2.750	3.500	1.000	1.375	1.875	5.281
	1.000	3/4"-16 x 1.125	1"-14 x 1.125	7/8"-14 x 1.125	7/8"-14 x 1.875	1.499	---	.500	---	.875	2.500	3/8	-6	.375	1.500	1.000	.406	.562	.375	---	3.625	2.375	2.335	1.966	---	---	.438	2.875	.500	.938	.375	.375	3.250	4.000	1.000	1.375	1.875	5.531
	1.375	1"-14 x 1.625	3/8"-12 x 1.625	1 1/4"-12 x 1.625	1 1/4"-12 x 2.500	1.999	---	.625	---	1.125	3.000	3/8	-6	.375	1.500	1.000	.406	.562	.375	---	3.750	2.875	2.460	2.320	---	---	.438	3.000	.500	.938	.375	.375	3.750	4.500	1.000	1.375	1.875	5.906

MEVA DESIGN

FILE: LH15.dwg REV: 09-25-06