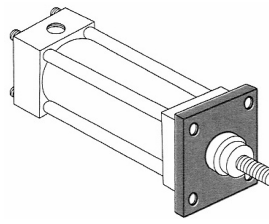


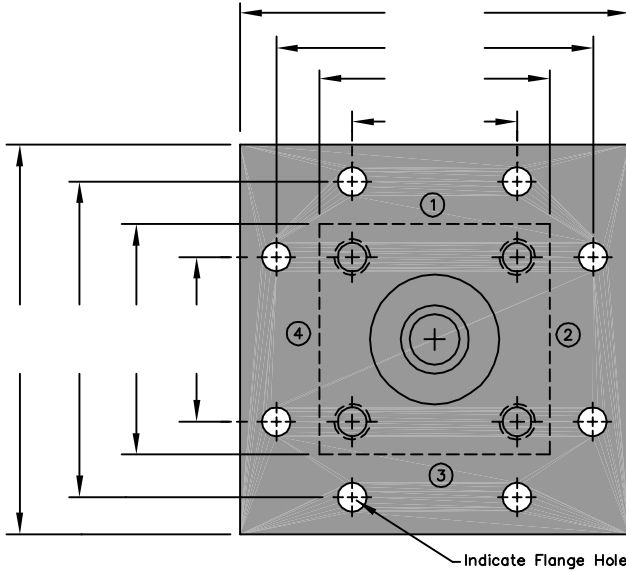
# Peninsular Sizing Chart

## Head Square Flange

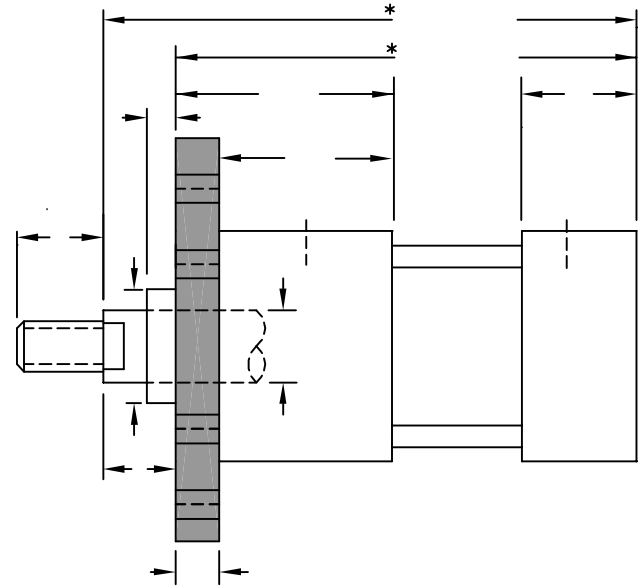
### MF5 Mount



Date Submitted: \_\_\_\_\_  
 Name: \_\_\_\_\_  
 Company: \_\_\_\_\_  
 Email: \_\_\_\_\_  
 Phone: \_\_\_\_\_  
 Fax: \_\_\_\_\_



Indicate Flange Hole Diameters



Above - Fill in Actual Cylinder Dimensions

Below - Check ALL Applicable Boxes & Provide ALL Information to Best Describe the Cylinder

- Hydraulic Cylinder - High Pressure with Tie Rods
- Hydraulic Cylinder - Low Pressure with Tie Rods
- Hydraulic Cylinder - Welded Type without Tie Rods
- Air Cylinder - Steel End Caps & Steel Tube with Tie Rods
- Air Cylinder - Aluminum End Caps & Tube with Tie Rods
- Air Cylinder - Aluminum without Tie Rods

If Hydraulic, Indicate Working Pressure: \_\_\_\_\_

If Hydraulic, Indicate Fluid Type: \_\_\_\_\_

Is the Cylinder NFPA ? Yes  or No

Is the Cylinder Metric ? Yes  or No

Are there Tie Rods on this Cylinder ? Yes  or No

Bore Size: \_\_\_\_\_ Stroke Length: \_\_\_\_\_

Cylinder Tube Material : \_\_\_\_\_

Cylinder End Cap Material : \_\_\_\_\_

Does this Cylinder Have Proximity Switches? Yes  No

Does the Cylinder Have Cushion(s) ? Yes  No

Supply Port Thread Type NPT  SAE (O-Ring)  Other (Describe): \_\_\_\_\_ Port Thread Size (Specify): \_\_\_\_\_

Piston Rod Diameter: \_\_\_\_\_ Piston Rod Threads : Male  Female  Other (Describe) : \_\_\_\_\_

Specify Piston Rod Thread Diameter, Pitch & Length ( For Example: 3/4" - 16 x 1.125" ) : \_\_\_\_\_

Indicate Existing Cylinders Manufacturer & Model Number : \_\_\_\_\_

In the Spaces Below, Indicate the Position(s) of Supply Ports & Cushions (if Required) for Both the Front & Rear End Caps. Reference the End Cap Feature Locations Chart Below.

#### Front End Cap

Front End Cap - Position #1 \_\_\_\_\_

Front End Cap - Position #2 \_\_\_\_\_

Front End Cap - Position #3 \_\_\_\_\_

Front End Cap - Position #4 \_\_\_\_\_

#### Rear End Cap

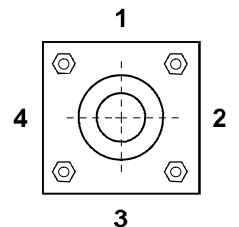
Rear End Cap - Position #1 \_\_\_\_\_

Rear End Cap - Position #2 \_\_\_\_\_

Rear End Cap - Position #3 \_\_\_\_\_

Rear End Cap - Position #4 \_\_\_\_\_

#### End Cap Feature Locations Chart



Always View the Cylinder Through the Rod End ( Head End )

Indicate any other Special Cylinder Features if applicable. If available, provide Sketches, Engineering Drawings and Photographs of the cylinder. If applicable, indicate the Mode of Cylinder Failure, Harsh Environmental Factors, Electronic Positioning Devices or any other Pertinent Information regarding the Existing Cylinder. For any questions, please call Peninsular Inside Sales at 1-800-526-7968.