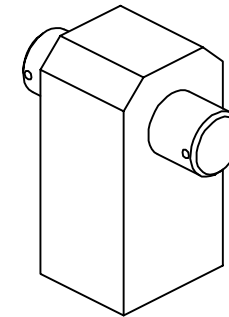
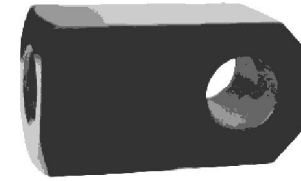
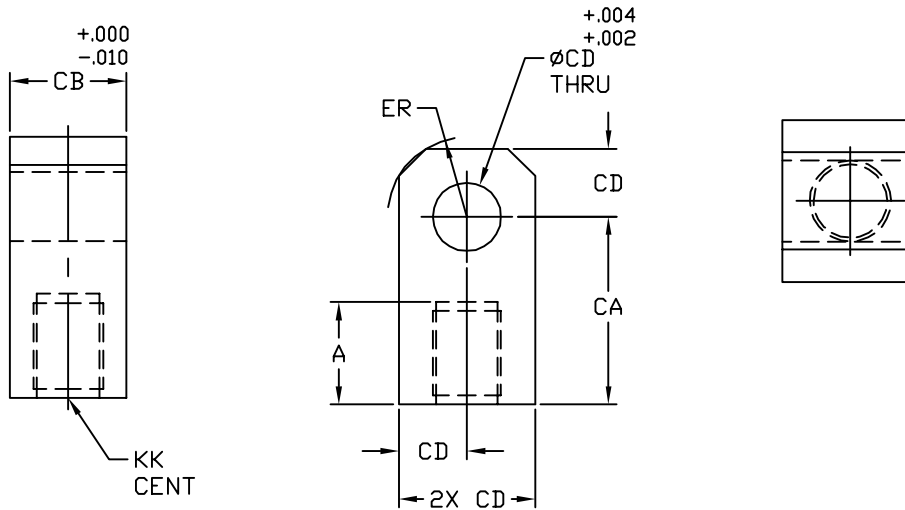


# NFPA Rod Eye

## Model - 65



THIS ROD EYE includes

- (1) STRAIGHT CLEVIS PIN &
- (2) COTTER PINS INCLUDED

PART No.	A	CA	CB	CD	ER	KK
C1150-65G	.750	1.500	.750	.500	.625	7/16-20
C1150-65	.750	1.500	.750	.500	.625	1/2-20
C1150-65P	.750	1.500	.750	.500	.625	5/8-18
C1200-65	1.125	2.062	1.250	.750	.875	3/4-16
C1200-65I	1.125	2.062	1.250	.750	.875	7/8-14
C1400-65	1.625	2.812	1.500	1.000	1.188	1-14
C1400-65G	1.625	2.812	1.500	1.000	1.188	1 1/4-12
C1600-65	2.000	3.438	2.000	1.375	1.562	1 1/4-12
C1600-65I	2.000	3.438	2.000	1.375	1.562	1 1/2-12
C1800-65	2.250	4.000	2.500	1.750	2.000	1 1/2-12
C1900-65	3.000	5.000	2.500	2.000	2.500	1 7/8-12
C1901-65	3.500	5.812	3.000	2.500	2.812	2 1/4-12
C1902-65	3.500	6.125	3.000	3.000	3.250	2 1/2-12
C1904-65	4.500	7.625	4.000	3.500	3.875	3 1/4-12
C1906-65	5.500	9.125	4.500	4.000	4.438	4-12
C1908-65	6.500	11.125	6.000	5.000	5.500	5-12

11.09



27650 Groesbeck Highway  
Roseville, Michigan 48066

Phone: (586) 775-7211 Fax: (586) 775-4545  
website: [www.peninsularcylinders.com](http://www.peninsularcylinders.com)  
email: [sales@peninsularcylinders.com](mailto:sales@peninsularcylinders.com)