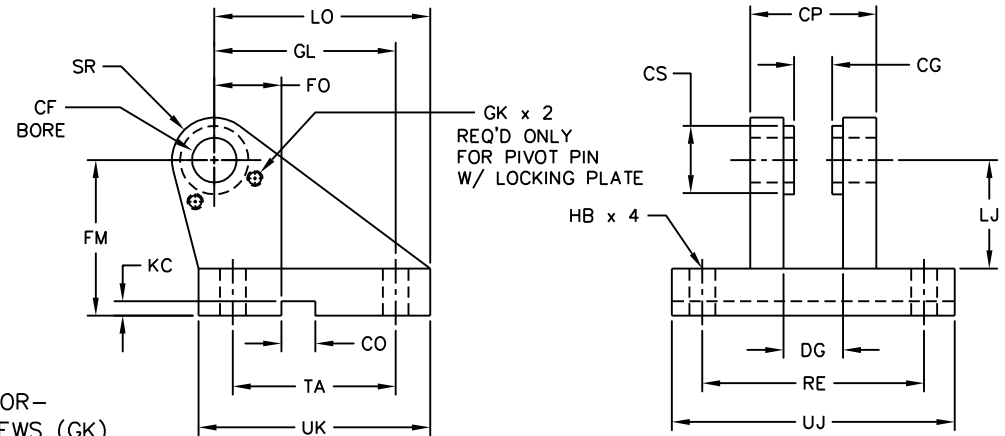


# CLEVIS BRACKET FOR SPHERICAL PLAIN BEARING

## PENINSULAR<sup>®</sup> CYLINDER COMPANY

METRIC HIGH PRESSURE HYDRAULIC CYLINDER ACCESSORIES  
SMALL BORE SERIES - ISO 6020-2  
WORKING PRESSURE - 160 BAR (2320 PSI)  
RATED PRESSURE - 250 BAR (3625 PSI)

NOTE: CLEVIS BRACKET (-72) WILL BE SUPPLIED WITH  
THE APPROPRIATE ACCESSORIES AS FOLLOWS:  
PIVOT PIN-COTTER PIN TYPE (-72P), PIVOT PIN-SNAP RING TYPE (-72PG), -OR-  
PIVOT PIN-LOCKING PLATE TYPE (-72PL) & LOCKING PLATE (-67) & (2) SCREWS (GK)



DIMENSIONS IN MILLIMETERS

| ORDER NUMBER | TYPICAL BORE DIAMETER | TYPICAL PIN DIAMETER | NOMINAL FORCE (N) | CF K7 | CG +3.0 +1.0 | CO N9 | CP H14 | CS (MAX) | DG +2.0 -0.0 | FO JS14 | FM JS11 | GK  | GL JS13 | HB   | KC +0.3 -0.0 | LJ    | LO    | RE JS13 | SR (MAX) | TA JS13 | UJ    | UK    | WEIGHT (KG) |
|--------------|-----------------------|----------------------|-------------------|-------|--------------|-------|--------|----------|--------------|---------|---------|-----|---------|------|--------------|-------|-------|---------|----------|---------|-------|-------|-------------|
| IHP25-72     | 25                    | 12.0                 | 8 000             | 12.0  | 10.0         | 10.0  | 30.0   | 16.0     | 12.0         | 16.0    | 40.0    | M6  | 46.0    | 9.0  | 3.3          | 29.0  | 56.0  | 55.0    | 12.0     | 40.0    | 75.0  | 60.0  | 0.52        |
| IHP32-72     | 32                    | 16.0                 | 12 500            | 16.0  | 14.0         | 16.0  | 40.0   | 22.0     | 16.0         | 18.0    | 50.0    | M6  | 61.0    | 11.0 | 4.3          | 38.0  | 74.0  | 70.0    | 16.0     | 55.0    | 95.0  | 80.0  | 1.05        |
| IHP40-72     | 40                    | 20.0                 | 20 000            | 20.0  | 16.0         | 16.0  | 50.0   | 25.0     | 19.0         | 20.0    | 55.0    | M6  | 64.0    | 14.0 | 4.3          | 40.0  | 80.0  | 85.0    | 20.0     | 58.0    | 120.0 | 90.0  | 1.72        |
| IHP50-72     | 50                    | 25.0                 | 32 000            | 25.0  | 20.0         | 25.0  | 60.0   | 30.0     | 24.0         | 22.0    | 65.0    | M6  | 78.0    | 16.0 | 5.4          | 49.0  | 98.0  | 100.0   | 25.0     | 70.0    | 140.0 | 110.0 | 2.72        |
| IHP63-72     | 63                    | 30.0                 | 50 000            | 30.0  | 22.0         | 25.0  | 70.0   | 35.0     | 26.0         | 24.0    | 85.0    | M6  | 97.0    | 18.0 | 5.4          | 63.0  | 120.0 | 115.0   | 30.0     | 90.0    | 160.0 | 135.0 | 5.15        |
| IHP80-72     | 80                    | 40.0                 | 80 000            | 40.0  | 28.0         | 36.0  | 80.0   | 47.0     | 32.0         | 24.0    | 100.0   | M8  | 123.0   | 22.0 | 8.4          | 73.0  | 148.0 | 135.0   | 40.0     | 120.0   | 190.0 | 170.0 | 9.30        |
| IHP100-72    | 100                   | 50.0                 | 125 000           | 50.0  | 35.0         | 36.0  | 100.0  | 58.0     | 41.0         | 35.0    | 125.0   | M8  | 155.0   | 30.0 | 8.4          | 92.0  | 190.0 | 170.0   | 50.0     | 145.0   | 240.0 | 215.0 | 18.3        |
| IHP125-72    | 125                   | 60.0                 | 200 000           | 60.0  | 44.0         | 50.0  | 120.0  | 68.0     | 50.0         | 35.0    | 150.0   | M10 | 187.0   | 39.0 | 11.4         | 110.0 | 225.0 | 200.0   | 60.0     | 185.0   | 270.0 | 260.0 | 35.0        |
| IHP160-72    | 160                   | 80.0                 | 320 000           | 80.0  | 55.0         | 50.0  | 160.0  | 90.0     | 65.0         | 35.0    | 190.0   | M10 | 255.0   | 45.0 | 11.4         | 142.0 | 295.0 | 240.0   | 80.0     | 260.0   | 320.0 | 340.0 | 63.0        |
| IHP200-72    | 200                   | 100.0                | 500 000           | 100.0 | 70.0         | 63.0  | 200.0  | 111.0    | 80.0         | 35.0    | 210.0   | M10 | 285.0   | 48.0 | 12.4         | 152.0 | 335.0 | 300.0   | 100.0    | 300.0   | 400.0 | 400.0 | 109.0       |

ACCESSORY MOUNTING DIMENSIONS CONFORM TO ISO 8133

ACCESSORIES ARE DESIGNED FOR, BUT NOT LIMITED TO, ISO 6020-2 HYDRAULIC CYLINDERS



27650 Groesbeck Highway Roseville Michigan 48066-2759 Telephone: 586-775-7211 Fax: 586-775-4545  
Toll Free: 800-526-7968 Internet: <http://www.peninsularcylinders.com> Email: [sales@peninsularcylinders.com](mailto:sales@peninsularcylinders.com)  
REL. 07-08-02

